

*Seedstock Plus South Missouri
Bull & Female Sale*

March 28, 2026

12 noon

*Joplin Regional Stockyards
Carthage, Missouri*

**ALL BULLS & REGISTERED FEMALES SELL WITH
GENOMIC-ENHANCED EPDS!**

ALL ARE SIRE VERIFIED, COAT COLOR & POLLED TESTED!



Bid & Buy at:
DVAuction



Working Together for Industry Excellence

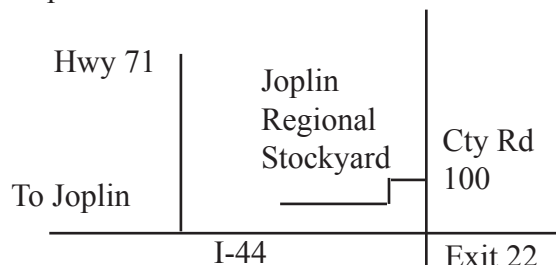
S+

Seedstock Plus

Seedstock Plus South Missouri Bull & Female Sale

Saturday March 28, 2026 * 12 noon
Joplin Regional Stockyards, Carthage, MO

Map to Sale Site:



Directions to Sale Site:

Take Exit 22 (Cty Rd 100) off of I-44 and turn north - then take the frontage road to the Stockyards entrance.

Travel:

Commercial Air Service is available to Kansas City, MO which is 175 miles north. There are regional airports at both Springfield and Joplin. Call if you need transportation to or from an airport!

Accommodations:

Super 8 Motel, Carthage MO
417-359-9000

Quality Inn Hotel
Carthage, MO
417-359-5900

Days Inn, Carthage, MO
417-358-3900

After Sale Care:

We will be happy to care for your bull/s until you are ready for them. The buyer will be responsible for feed at cost until delivery.

Seedstock Plus Customer Service Programs

Guaranteed Sight-Unseen Purchases

Free Delivery on bulls
or \$100 Discount if picked up sale day

Bull Warranty Program

Bulls are guaranteed for Fertility, Structure and Disposition. For an additional 5% of purchase price, bull can be warrantied for injury and death for 6 months.

Marketing Assistance Program

- Feeder Calves
- Replacement Females
- Bred Heifers, Cows and Pairs

If you need additional information on a particular program, call us at the Seedstock Plus office.

Health

Seedstock Plus Bulls have been tested and found negative for PI BVD. We recommend producers purchase only bulls that are negative for Persistent Infected BVD Virus. **Bulls are also tested NEGATIVE for Trichomoniasis.** This is not mandated by the state of Missouri yet however, several surrounding states are requiring it and we felt it best to be on top of that. The bulls have been vaccinated and boosted with IBR, BVD, PI-3, BRSV-4, Blackleg & Vibrio Lepto. They have been on a regular de-worming schedule since weaning. All the bulls have passed a breeding soundness exam that includes live semen evaluation, palpation and scrotal measurement. All the necessary health tests have been performed and interstate health papers will be available sale day.

Seedstock Plus South Missouri Bull & Female Sale

March 28, 2026 * 12 noon

Joplin Regional Stockyards, Carthage, MO

John Burbank cell: 660-734-1165

Matt Burbank cell: 660-734-2739

Lanny Ford cell: 870-703-4345

Sale Day Office (Abilene Workman): 573-721-4090

Jeremy Anstine, Kingsville Livestock Auctioneer..... 816-716-9288

Tucker Anstine, ring service.....816-345-0860

Doug Fager, ring service..... 913-645-9497

Selling: 125 - Balancer & Gelbvieh 18 Month Old & Yearling Bulls

55 Open Heifers

About the Bulls:

- Prior to delivery to the test, bulls are sorted and culled at home
- Bulls are brought in to be fed together at a Regional Development Center
- Bulls are grown with their longevity in mind - fed for 3# ADG with high roughage ration
- Bulls are culled again prior to catalog for poor gain, conformation, disposition, etc.
- All bulls have passed a thorough breeding soundness exam prior to the sale
- All bulls are tested Negative for BVD -PI3 & Trichomoniasis
- All bulls have genomically enhanced EPDs and are SIRE VERIFIED.
- All Gelbvieh & Balancer bulls are Polled and Coat Color tested.
- The bulls are Guaranteed 'Free' of the currently known Genetic Defects we can test for.
- EPD's updated weekly so there will be updated EPDs, Tenderness scores, Ultrasound, frame scores & scrotal measurements will be available on a supplement sheet on sale day.



We are planning to video each of the bulls on March 16-18th - after they have been semen checked and clipped. The videos will be posted during that week and will be available to view by March 24th. If you would like to see a video of a specific bull and have access to high speed internet - you can go to our website OR www.dvauction.com and download the videos by the bull's LOT #.

EPDs ARE CURRENT AS OF 2/10/2026

Internet Bidding:

The sale will be available to watch and bid real time at www.dvauction.com

1. Create an account under the 'create new account' tab.
2. Apply for bidding by clicking 'apply for bidding' in the upper left corner of the screen. **AT LEAST 24 HOURS PRIOR TO THE SALE!**
3. Tune in to the sale to make your purchases!

Working Together for Industry Excellence



Seedstock Plus

Seedstock Plus, LLC

John E. Burbank, CEO

18864 Kepler Dr.

St. Catharine, MO 64628

Toll Free: 877-486-1160 or

cell: 660-734-1165

email: john@seedstockplus.com

www.seedstockplus.com

DVAuction
Broadcasting Real-Time Auctions

Industry Commitment

The bulls included in this offering come from producers who are in the Seedstock business for the long haul. They raise the kind of bulls that produce the type of feeder calves that feed well and grade and yield on the rail. These are the kind of bulls that produce the replacement heifers that make our commercial customers so successful. Feel free to contact any of the members listed below if you have questions.

4 W Farms
Contact: Brycen Wiedmer
Troy, KS
816-262-4172

Bryce Family Farms LLC
Contact: Bryce Cripps
Columbia, MO
573-808-4742

Burbank Cattle Company
Contact: Matt Burbank
St. Catharine, MO
660-734-2739

Burns Gelbvieh
Contact: Jesse Burns
Covington, OH
937-606-4861

Chapuis Cattle Company
Contact: Charlie Chapuis
Louisiana, MO
573-754-0079

Darnell Farms
Contact: Bobby Darnell
Indian Mound, TN
931-624-5174

Duck River Gelbvieh
Contact: David Bates
Duck River, TN
931-209-5053

Flint Hills Gelbvieh
Contact: Ronald Schultz
Alma, KS
785-617-0033

**Gatson-Workman
Gelbvieh**
Contact: Adam Gatson
Vandalia, MO
573-721-6482

Hebron Ranch
Contact: Daniel Bell
Olaton, KY
270-256-8680.

Holtgrewe Farm
Contact: Chris Holtgrewe
Pea Ridge, AR
479-871-4506

Horizon Farms
Contact: Ed Laverentz
Cheney, KS
316-990-5088

JGP Gelbvieh
Contact: Josh Phillips
Lathrop, MO
816-914-6053

KZ Cattle Company
Contact: Kerry Zillinger
Columbus, KS
785-543-7614

L & L Gelbvieh
Contact: Wes Lasher
Smithland, KY
270-564-2315

Lawman Farms
Contact: Kathleen Merritt
Columbia, MO
419-439-3730

Little Sioux Gelbvieh
Contact: Jack Welle
Milford, IA
712-251-4641

Meng Farms Cattle Co.
Contact: Doug Meng
Troy, KS
913-370-0334

Mulroy Farms LLC
Contact: Tim Mulroy
Mayetta, KS
785-640-6401
Narrow Gate Cattle

Contact: Larry Kendall
Osage Beach, MO
573-216-9719

Norwood Gelbvieh
Contact: Jerry Norwood
Carthage, MO
417-850-1023

Pederson Gelbvieh
Contact: David Pederson
Buffalo, MN
320-333-2014

Wood Farms
Contact: Pat Wood
Meadville, MO
660-247-2577

RM Cattle
Contact: Ryan Grable
Troy, KS
785-850-0686

Rockin' U Ranch
Contact: Stan Utley
Richmond, MO
816-719-3793

Sandy Knoll Farm Gelbvieh
Contact: Brian L Dunn
St. John, KS
620-786-4039

Stuecken Brothers
Contact: Derek Stuecken
Freeburg, MO
573-690-8543

Wannabe Stock Farm
Contact:
Gregory Summers
Smithville, MO
816-392-5242

Weller Farms
Contact: Rick Weller
Lathrop, MO
913-908-9374

Wolf Gelbvieh
Contact: Travis Wolf
Gothenburg, NE
308-529-3733

Yellow Dog Gelbvieh
Contact: Gary Felger
Lohman, MO
573-782-2737

Zimmerman Gelbvieh
Contact:
Tyler Zimmerman
Harper, KS
620-243-2876

About The Catalog:

Color possibilities:
 Black - known red carrier
 Homo Black - known homozygous black

Polled Status:
 Polled: Single Polled
 Scurred
 Homo Polled

Balancer

COLOR

POLLED

540

EPD'S: All Bulls have an LD Profile and 'Genomic Enhanced EPDs'.

Breed Percentile Ranking: This number corresponds to the EPD directly above it to compare EPDs within breed.

PFX NAME

GRAND SIRE
 SIRE
 GRAND DAM
 MAT GRAND SIRE
 DAM
 MAT GRAND DAM

REG #:	REG #:
BD:	B DATE
BW:	BW
WW:	Adj WW

Actual Data:
 Registration #
 Birthdate
 Actual BW
 Adjusted WW

CE BW WW YW CM MW ST DOC RE MB MPI FPI TPI \$G

BREED PERCENTILE RANKING PER EPD

Breed % **OWNER:**

Breed Make-up on Balancer bulls. Abbreviations include: AN = Black Angus AR = Red Angus GV = Gelbvieh XX = unknown

Expected Progeny Differences 'EPD' Definitions

The American Gelbvieh Association transitioned to the BOLT system for EPD calculations in the fall of 2018. The American Angus Association had already been using this system for the previous year. There are 12 beef breed Associations in collaboration to form IGS (International Genetic Solutions) which brings a new, streamlined method for incorporating genomic results into the EPDs. This incorporates data and updates EPDs on a weekly basis.

Expected Progeny Differences 'EPD' Definitions

EPD Definitions:

CE: Calving Ease – A number that predicts the average difference in ease with which a sire's calves will be born when he is bred to first calf heifers – higher numbers indicate greater calving-ease.

BW: Birth Weight, **WW:** Weaning Weight & **YW:** Yearling Weight – All are expressed in pounds, this shows the expected number of pounds a bull or female will add or subtract from their progeny's birthweight, weaning weight and yearling weight respectively.

MK: Milk: expressed in pounds of weaning weight that a female will add/subtract or that a bull's daughters will have.

CM: Calving Ease Maternal: this EPD predicts how well an animal's daughters will calve with a higher number being easier calving.

NEW! MW: Mature Weight: Body weight of cows adjusted to six years of age at body condition score 5. MWT is reported in pounds and is computed from a genetic model that leverages information from weaning weight, post-weaning gain, and mature weights of cows. Reported weights are adjusted for both age at observation and for body condition.

ST: Stayability: Predicts the genetic difference, in terms of percent probability, that a bull's daughters will stay productive within a herd to at least six year of age.

DOC: is expressed as a difference in yearling cattle temperament, with a higher value indicating more favorable docility. It predicts the average difference of progeny from a sire in comparison with another sire's calves. In herds where temperament problems are not an issue, this expected difference would not be realized.

RE: Rib Eye Area: expressed in square inches of rib eye muscle area adjusted to a constant fat endpoint.

MB: Marbling: expressed in degrees of marbling score, a determinant of USDA Quality Grade. Value is adjusted to a constant fat endpoint.

MPI, FPI, TPI: SEE INDEX DEFINITIONS ON FACING PAGE

NEW! \$G: \$GAIN: reports the difference in expected marginal value of gain less the cost of feed to achieve that gain. Reported in dollars of marginal profit with more positive values representing increased efficiency and profit.



We are proud to announce that moving forward, all Seedstock Plus bulls will be developed by Burbank Bull Development LLC in St. Catharine, MO. Matt & Cammie Burbank, with the help of their kids, will handle the daily feed & care of all Seedstock Plus bulls, on-line females and growing bulls from weaning until graduating into the Seedstock Plus development test.

We would encourage anyone to come visit the new and improved facility that will accommodate all we do here at home and all the needs of the Seedstock Plus program. Although we did not install the GrowSafe system (due to cost & labor issues), we have made some significant improvements to the bull development process such as large pasture turn-out paddocks for the bulls. Our family is committed to the future success of the Seedstock Plus program.



Bull Warranty Program Insurance for your bull!

Several years ago, Seedstock Plus instituted an insurance program for new bull purchases in an effort to protect our customers from a catastrophic loss if something should happen to a bull within the first breeding season. This program covers any and all possible things that a bull can do to himself in the first six months of ownership. The warranty costs **5%** of the purchase price and should you have to use it, we try to either bring you a comparable replacement or find a suitable loaner bull to get the cows bred if you are still in the midst of breeding season. If something happens to him towards the end of the season, we still cover that but often will either take the bull back and issue a credit towards your next purchase or have you ship the bull, keep the salvage funds and issue a credit for the balance. Any way you look at it - we get you back even! We've warrantied bulls that have been hit by lightning, hit by trains, drowned, broken various body parts or been injured in such a way that he won't ever be sound to breed cows again.

There are very few affordable commercial insurance policies that will cover a bull for loss of use. Farm policies will cover 'acts of God' (so do we!) but again, an injury is just your tough luck. The **5%** of purchase price cost is a small price if something happens to your bull within that first 6 months!

We appreciate the fact that you've put your trust in us to present you with a bull that has a good disposition, good feet and legs and will breed cows - we feel those things should be 'on us' and you don't need insurance if you have a problem in one of these areas - you just need to let us know and we'll take care of it. We try to catch every possible problem prior to the sale but things happen and bulls are bulls.... But if your bull gets injured or dies, he needs to be insured! Take a good look at what the warranty can offer you and be sure to tell us at the settlement table that you want to insure your bull!

About Balancer® Bulls

The Profitable Blend of Angus and Gelbvieh Genetics!

Balancer hybrids offer a simple and powerful way to maintain hybrid vigor and the proper blend of British and Continental genetics in your cowherd without complicated crossbreeding systems. Registered Balancer hybrids combine the Angus advantages of calving ease, moderate mature size, marbling and convenience traits with Gelbvieh growth, muscle leanness, fertility and unequaled pounds of calf per cow exposed in a single animal. And, documented research proves that Balancer hybrids offer the same consistency as their purebred parents with improved uniformity of composition. Plus, Balancers are registered seedstock, complete with documented parentage and EPD's. Balancer bulls are registered as Gelbvieh and Angus or Red Angus hybrids with a minimum of 75% of the pedigree documented and with both the sire and the dam recorded with their respective association. There are also registered Hybrid bulls in this category, the difference being a varying percentage of Gelbvieh as well as a mixture of other breeds. These bulls can be used in a similar way as the Balancer bulls as long as the buyer is aware of the actual breed makeup as close as can be known.

Both the Balancer & Hybrid bulls' EPD's are figured on the Gelbvieh base and can be compared to the Gelbvieh bulls.

The average EPD's for Balancer bulls as of 2/11/26 are:

CE: 13 BW: -.5 WW: 74 YW: 116 Milk: 24 CM: 7 MW:134 ST: 15
DOC: 13 REA: .51 MB: .39 MPI: 105 FPI: 125 TPI: 156 \$G: .05

Balancer Homo Black Homo Polled 311

GMF 461M

POSS DEADWOOD 9731
POSS DEADWOOD 2642
G A R SUNRISE 2016

WAHL 004H ET
GMF MENG 249K
GMF MENG 57C

REG #:	1613007
BD:	22-Aug-24
BW:	61
WW:	546

CE	BW	WW	YW	MK	CM	MW	ST	DOC	REA	MB	MPI	FPI	TPI	\$G	
21	-5.6	71	94	34	11	91.6	17	16	0.67	0.86	146.87	188.33	284.46	0.12	
BREED PERCENTILE RANKING PER EPD															
2	1	65	95	1	3	95	20	3	20	1	1	3	1	3	
Breed %	50GV 50AN				OWNER:					Meng Farms Cattle Company					

Balancer Homo Black Homo Polled 312

NORG NORG MR EXPO M126

KCF BENNETT EXPONENTIAL
DBRG MR EXPONENTIAL 1403J ET
DBRG MS TWISTER 8167F ET

NORG TANK B274
NORG E126
VER MS CRANBERRY 126X

REG #:	1613754
BD:	23-Aug-24
BW:	78
WW:	627

CE	BW	WW	YW	MK	CM	MW	ST	DOC	REA	MB	MPI	FPI	TPI	\$G	
12	-0.5	79	128	23	6	151.1	16	12	0.29	0.520	104.21	130.92	163.23	0.11	
BREED PERCENTILE RANKING PER EPD															
55	50	30	25	60	65	25	30	55	90	25	55	45	45	5	
Breed %	42GV 58AN				OWNER:					Norwood Gelbvieh					

Balancer Homo Black Homo Polled 309

NORG NORG MR EXPO M119

KCF BENNETT EXPONENTIAL
DBRG MR EXPONENTIAL 1403J ET
DBRG MS TWISTER 8167F ET

WNBE FINAL WARNING 348A
NORG MISSY G191
NORG MISSY A191

REG #:	1613767
BD:	10-Aug-24
BW:	72
WW:	618

CE	BW	WW	YW	MK	CM	MW	ST	DOC	REA	MB	MPI	FPI	TPI	\$G	
16	-1.1	64	96	27	8	61.6	20	12	0.39	0.40	133.33	120.18	188.94	0.02	
BREED PERCENTILE RANKING PER EPD															
15	35	90	90	20	25	95	3	55	75	45	2	60	20	75	
Breed %	47GV 53AN				OWNER:					Norwood Gelbvieh					

Balancer Homo Black Homo Polled 313

RGCC Powercat 483M

JRI PROBITY 254D28
JGPG PROBITY 138J ET
JGPG BLACKCAP 7216E

SYD BOONDOCKS AXEL 3116A ET
BWF BRANDYWINE DARLA 662D
BWF 181Y

REG #:	1619326
BD:	27-Aug-24
BW:	80
WW:	542

CE	BW	WW	YW	MK	CM	MW	ST	DOC	REA	MB	MPI	FPI	TPI	\$G	
11	0.4	82	128	26	7	181	16	13	0.76	0.18	95.07	130.3	132.31	-0.01	
BREED PERCENTILE RANKING PER EPD															
65	70	20	25	30	45	4	30	30	10	90	85	45	75	95	
Breed %	62GV 38AN				OWNER:					RM Cattle					

Balancer Black Homo Polled 310

CCFM 50M

KCF BENNETT B29
KCF BENNETT E906
KCF MISS W666 A944

CCFM 302E
CCFM 265K
CCFM 770E

REG #:	1614665
BD:	20-Aug-24
BW:	74
WW:	590

CE	BW	WW	YW	MK	CM	MW	ST	DOC	REA	MB	MPI	FPI	TPI	\$G	
15	-1	85	144	21	7	202.3	16	14	.40	.43	99.65	134.71	153.36	0.7	
BREED PERCENTILE RANKING PER EPD															
25	40	15	10	75	45	1	30	15	70	40	70	40	55	25	
Breed %	62GV 32AN 6XX				OWNER:					Chapuis Cattle Farm					

Genomic-Enhanced EPDs

All of the bulls in the Seedstock Plus Program are DNA tested to be able to provide the most accurate, DNA -Enhanced EPDs as part of our commitment to bring you the best data so you can make the most informed decision and get the best bull for your program. Let us know if you need any help understanding any of the data.

BALANCER BULLS

Balancer Homo Black Homo Polled **314**
RGCC Powercat 484M

JRI PROBITY 254D28
 JGPG PROBITY 138J ET
 JGPG BLACKCAP 7216E

DMI 72E
RGCC LADY CAT 092H
 LJMC MAMIE 4232B

REG #:	1619327
BD:	27-Aug-24
BW:	68
WW:	536

CE	BW	WW	YW	MK	CM	MW	ST	DOC	REA	MB	MPI	FPI	TPI	\$G
15	-1.4	78	120	24	10	159.9	17	16	0.67	0.26	109.25	146.22	174.71	0.05
BREED PERCENTILE RANKING PER EPD														
25	30	35	40	45	10	15	20	3	20	80	40	25	30	40
Breed %		46GV 50AN 4AR			OWNER:		RM Cattle							

Balancer Homo Black Homo Polled **317**
TMGC SB Barcelona 255M

CCRO CAROLINA LEVERAGE 3214A
TMGC SB Formula 12E
 TMGC SB Danielle 07C

R B TOUR OF DUTY 177
SB FOREVER DUTY
 CIRCLE A FOREVER LADY 1217

REG #:	1617563
BD:	07-Sep-24
BW:	74
WW:	637

CE	BW	WW	YW	MK	CM	MW	ST	DOC	REA	MB	MPI	FPI	TPI	\$G
15	-2.2	77	120	29	10	132	19	14	0.7	0.54	123.47	169.91	225.28	0.04
BREED PERCENTILE RANKING PER EPD														
25	20	40	40	10	10	50	5	15	15	20	10	10	5	50
Breed %		39GV 61AN			OWNER:		Stuecken Brothers							

Balancer Homo Black Homo Polled **315**
NGCC M5

GMF FORTUNE 616D
HRZN FORTUNE H148
 HRZN D499

Y-WONDERFUL J57Y
TALY TALLEY MS BALANCER J105B
 TALY TALY 43Z

REG #:	1611972
BD:	03-Sep-24
BW:	85
WW:	560

CE	BW	WW	YW	MK	CM	MW	ST	DOC	REA	MB	MPI	FPI	TPI	\$G
6	1.4	69	104	24	4	115.9	11	10	0.54	0.420	81.72	126.41	144.41	0.03
BREED PERCENTILE RANKING PER EPD														
>95	90	70	80	45	90	85	95	90	45	45	>95	50	65	60
Breed %		68GV 32AN			OWNER:		Narrow Gate Cattle							

Balancer Homo Black Homo Polled **318**
NORG NORG MR EXPO M4

KCF BENNETT EXPONENTIAL
DBRG MR EXPONENTIAL 1403J ET
 DBRG MS TWISTER 8167F ET

HIGH MR FOUNDATION 9D83
MDR GREATA G34
 MDR E34

REG #:	1613764
BD:	08-Sep-24
BW:	74
WW:	675

CE	BW	WW	YW	MK	CM	MW	ST	DOC	REA	MB	MPI	FPI	TPI	\$G
13	-2.0	70	102	27	7	100	17	13	0.22	0.410	114.63	132.76	180.21	0.05
BREED PERCENTILE RANKING PER EPD														
40	20	70	80	20	45	90	20	30	95	45	25	40	25	40
Breed %		66GV 34AN			OWNER:		Norwood Gelbvieh							

Balancer Homo Black Homo Polled **316**
DRGF 419M

GMF FORTUNE 616D
HRZN H182
 HRZN E103

JJNR MR GOVENOR B44Z
JEB BCC DR MS BALANCE 211E
 LCBK BCC MS SHOGUN 45X

REG #:	1630417
BD:	07-Sep-24
BW:	66
WW:	580

CE	BW	WW	YW	MK	CM	MW	ST	DOC	REA	MB	MPI	FPI	TPI	\$G
15	-1	67	100	23	8	82.2	18	11	0.52	0.4	125.3	118.31	176.76	0
BREED PERCENTILE RANKING PER EPD														
25	40	80	85	60	25	>95	10	80	45	45	10	60	30	90
Breed %		73GV 27AN			OWNER:		Duck River Gelbvieh							

Balancer Homo Black Homo Polled **319**
RGCC Powercat 495M

JRI PROBITY 254D28
JGPG PROBITY 138J ET
 JGPG BLACKCAP 7216E

DCSF POST ROCK HIGHLY FOCUSED
RGCC LADY CAT 611D
 RGCC LADY CAT 420B

REG #:	1619336
BD:	10-Sep-24
BW:	80
WW:	567

CE	BW	WW	YW	MK	CM	MW	ST	DOC	REA	MB	MPI	FPI	TPI	\$G
14	-1.2	78	122	31	9	169.2	14	11	0.77	0.25	103.05	142.6	158.41	0.05
BREED PERCENTILE RANKING PER EPD														
30	35	35	40	4	15	10	65	80	10	80	60	30	50	40
Breed %		48GV 51AN 1XX			OWNER:		RM Cattle							



Balancer Homo Black Homo Polled **320**
TMGC SB Cactus 151M

TMMW DESTINATION 82Y
BTBR SAGUARO 8111F ET
 JEB BCC MISS OBJECTIVE 41W

TMGC SB SILENT NIGHTS 2005B
TMGC SB SILENCE 38E
 TMGC SB WARDON MATRON 2022B

REG #:	1617444
BD:	10-Sep-24
BW:	83
WW:	612

CE	BW	WW	YW	MK	CM	MW	ST	DOC	REA	MB	MPI	FPI	TPI	\$G
8	0.3	82	136	22	6	171.2	16	13	0.75	0.53	89.46	159.69	178.21	0.05
BREED PERCENTILE RANKING PER EPD														
90	70	20	15	65	65	10	30	10	20	95	15	30	40	
Breed %		54GV 46AN			OWNER:		Stuecken Brothers							

BALANCER BULLS

Balancer Homo Black Homo Polled
TMGC SB Cactus 148M

321

TMMW DESTINATION 82Y
BTBR SAGUARO 8111F ET
 JEB BCC MISS OBJECTIVE 41W
 TMGC SB SILENT NIGHTS 2005B
TMGC SB SILENCE 55F
 TMGC SB PEARL 23B

REG #:	1617441
BD:	11-Sep-24
BW:	78
WW:	581

CE	BW	WW	YW	MK	CM	MW	ST	DOC	REA	MB	MPI	FPI	TPI	\$G
16	-2.5	64	96	25	7	106.4	17	12	0.37	0.55	113.51	103.96	156.09	0.02
BREED PERCENTILE RANKING PER EPD														
15	15	90	90	40	45	85	20	55	75	20	25	80	50	75
Breed %	63GV 37AN				OWNER:	Stuecken Brothers								



Balancer Homo Black Homo Polled
JEB BCC Black Balance 14M

322

JKGF CHIEF JUSTICE C205
OGSG OVER FOR JUSTICE 217F
 WHITE ROCK PRIDE U217

REG #:	1614716
BD:	12-Sep-24
BW:	64
WW:	533

ERTL BARGAINING CHIP D677
JEB BCC MISS CHIPPIE 67K
 JGPG VELVET 7203E

CE	BW	WW	YW	MK	CM	MW	ST	DOC	REA	MB	MPI	FPI	TPI	\$G
16	-3.5	67	105	27	10	101.9	20	18	0.3	0.81	126.52	157.96	240.45	0.04
BREED PERCENTILE RANKING PER EPD														
15	10	80	75	20	10	90	3	1	85	2	5	15	3	50
Breed %	47GV 53AN				OWNER:	Burbank Cattle Company								

Balancer Homo Black Homo Polled
TMGC SB Cactus 145M

325

TMMW DESTINATION 82Y
BTBR SAGUARO 8111F ET
 JEB BCC MISS OBJECTIVE 41W

REG #:	1617438
BD:	17-Sep-24
BW:	83
WW:	606

TMGC SB SILENT NIGHTS 2005B
TMGC SB SILENCE 209E
 TMGC SB PEARL 137A

CE	BW	WW	YW	MK	CM	MW	ST	DOC	REA	MB	MPI	FPI	TPI	\$G
13	-1.4	72	114	22	8	122.9	15	16	0.05	0.51	106.97	106.39	148.33	0.05
BREED PERCENTILE RANKING PER EPD														
40	30	60	55	65	25	65	45	3	>95	25	45	80	60	40
Breed %	56GV 44AN				OWNER:	Stuecken Brothers								

Balancer Homo Black Homo Polled
WNBE 431M

323

TMMW DESTINATION 82Y
BTBR BTBR SAGUARO 8111F ET
 JEB BCC MISS OBJECTIVE 41W

REG #:	1607944
BD:	12-Sep-24
BW:	88
WW:	648

RB Night Prowler 3288
WNBE 131J
 DCSF POST ROCK TWIL A 167A8

CE	BW	WW	YW	MK	CM	MW	ST	DOC	REA	MB	MPI	FPI	TPI	\$G
10	2.2	88	151	20	8	195.5	14	12	0.94	0.43	91.08	168.57	179.2	0.13
BREED PERCENTILE RANKING PER EPD														
75	95	10	3	85	25	2	65	55	2	40	90	10	30	2
Breed %	44GV 56AN				OWNER:	Wannabe Stock Farm								

Balancer Homo Black Homo Polled
TMGC SB Legend 189M

326

G A R HIGH SECURITY JSF
IAND DUNN'S SAFE CRACKER 090J
 SKF DUNN'S MISS JACKPOT 572C

REG #:	1617491
BD:	17-Sep-24
BW:	76
WW:	546

BTBR SAGUARO 8111F ET
TMGC SB Verbena 134H
 TMGC SB SILENCE OF KARA 290E

CE	BW	WW	YW	MK	CM	MW	ST	DOC	REA	MB	MPI	FPI	TPI	\$G
14	-1.9	71	117	24	6	115.5	18	12	0.72	0.56	114.61	155.11	205.69	0.09
BREED PERCENTILE RANKING PER EPD														
30	20	65	50	45	65	75	10	55	15	20	25	15	15	15
Breed %	55GV 45AN				OWNER:	Stuecken Brothers								

Balancer Homo Black Homo Polled
TMGC SB Barcelona 259M

324

CCRO CAROLINA LEVERAGE 3214A
TMGC SB Formula 12E
 TMGC SB Danielle 07C

REG #:	1617567
BD:	13-Sep-24
BW:	76
WW:	605

TMGC SB SILENT NIGHTS 2005B
TMGC SB SILENCE 147F
 TMGC SB MADONNA 259C

CE	BW	WW	YW	MK	CM	MW	ST	DOC	REA	MB	MPI	FPI	TPI	\$G
15	-1.1	78	124	25	10	152.7	16	13	0.6	0.63	111.41	145.34	189.43	0.04
BREED PERCENTILE RANKING PER EPD														
25	35	35	35	40	10	20	30	30	10	35	25	20	50	
Breed %	61GV 39AN				OWNER:	Stuecken Brothers								

Balancer Homo Black Homo Polled
TMGC SB Cactus 192M

327

TMMW DESTINATION 82Y
BTBR SAGUARO 8111F ET
 JEB BCC MISS OBJECTIVE 41W

REG #:	1617493
BD:	19-Sep-24
BW:	72
WW:	658

TMGC SB Formula 12E
TMGC SB Danish 25K
 TMGC SB HILDA 44D

CE	BW	WW	YW	MK	CM	MW	ST	DOC	REA	MB	MPI	FPI	TPI	\$G
15	-2	78	117	22	8	138.6	18	15	0.46	0.57	119.15	148.49	197.53	0
BREED PERCENTILE RANKING PER EPD														
25	20	35	50	65	25	40	10	5	60	15	15	20	15	90
Breed %	70GV 30AN				OWNER:	Stuecken Brothers								

BALANCER BULLS



Balancer Homo Black Homo Polled
HRZN M306

331

DCE HILLE D453
GLM HASHTAG# H11
GLM W55

REG #:	1616288
BD:	23-Sep-24
BW:	74
WW:	615

SKF DUNN'S TOTAL TENDER 161H
HRZN K304
HRZN H370

CE	BW	WW	YW	MK	CM	MW	ST	DOC	REA	MB	MPI	FPI	TPI	\$G
17	-2.1	67	108	23	9	101.8	17	15	0.67	0.51	123.02	148.07	205.53	0.04
BREED PERCENTILE RANKING PER EPD														
10	20	80	70	60	15	90	20	5	20	25	10	25	15	50
Breed %	70GV 28AN 2AR			OWNER:			Horizon Farms							

Balancer Homo Black Homo Polled
TMGC SB LEGEND 198M

328

G A R HIGH SECURITY JSF
IAND DUNN'S SAFE CRACKER 090J
SKF DUNN'S MISS JACKPOT 572C

REG #:	1617500
BD:	19-Sep-24
BW:	78
WW:	639

JKGF CIVIL WAR E92
ERTL 1728J MISS CW 728
ERTL 728E GOVERNESS DITKA

CE	BW	WW	YW	MK	CM	MW	ST	DOC	REA	MB	MPI	FPI	TPI	\$G
10	-0.4	77	124	27	6	138.8	16	14	0.82	0.42	102.92	156.66	184.21	0.14
BREED PERCENTILE RANKING PER EPD														
75	50	40	35	20	65	40	30	15	5	45	60	15	25	2
Breed %	52GV 48AN			OWNER:			Stuecken Brothers							

Balancer Homo Black Homo Polled
TMMW MR HEDGE FUND 122M

332

DEER VALLEY HEDGE FUND
DBRG MR HEDGE FUND 2355K
DBRG MS OUTLOOK 468B

REG #:	1618700
BD:	23-Sep-24
BW:	67
WW:	716

HPR ROYAL BISMARCK 0504
TMMW MISS BISMARCK 127B
TMMW GRANITES MISS COCOA 259X

CE	BW	WW	YW	MK	CM	MW	ST	DOC	REA	MB	MPI	FPI	TPI	\$G
16	-2.5	78	114	30	10	142.8	17	12	0.74	0.450	121.23	155.08	199.83	0.6
BREED PERCENTILE RANKING PER EPD														
15	15	35	55	10	10	35	20	55	10	35	10	15	15	30
Breed %	50GV 50AN			OWNER:			Mulroy Farms, LLC							

Balancer Homo Black Homo Polled
TMGC SB Derecho 193M

329

DBRG WHIRLWIND 735E
VRT LAZY TV DERECHO J660
VRT LAZY TV WINNIE G133

REG #:	1617494
BD:	20-Sep-24
BW:	76
WW:	630

DMP F185
TMGC MISS ALLIED 126K
TMMW MISS BISMARCK 168A

CE	BW	WW	YW	MK	CM	MW	ST	DOC	REA	MB	MPI	FPI	TPI	\$G
12	-1.3	85	133	26	9	158.1	11	11	0.76	0.14	105.69	141.2	152.1	0.06
BREED PERCENTILE RANKING PER EPD														
55	35	15	20	30	15	95	80	10	95	50	30	55	30	
Breed %	48GV 52AN			OWNER:			Stuecken Brothers							

Balancer Homo Black Polled
TMGC SB CACTUS 277M

333

TMMW DESTINATION 82Y
BTBR SAGUARO 811F ET
JEB BCC MISS OBJECTIVE 41W

REG #:	1617584
BD:	26-Sep-24
BW:	74
WW:	562

MR PAYWEIGHT A10E
TMGC SB Sugar Mama 159H
HR JUSTAMERE SANDI

CE	BW	WW	YW	MK	CM	MW	ST	DOC	REA	MB	MPI	FPI	TPI	\$G
20	-4.4	67	108	20	10	95.3	21	9	0.25	0.45	137.67	113.22	185.96	0.1
BREED PERCENTILE RANKING PER EPD														
3	3	80	70	85	10	95	1	>95	90	35	1	70	25	10
Breed %	53GV 47AN			OWNER:			Stuecken Brothers							

Balancer Homo Black Homo Polled
HRZN M305

330

WFA FLYING H MR PRO 20G
SKF DUNN'S COMPLETE PRO 214J
SKF DUNN'S MISS WHARTON 619D

REG #:	1616290
BD:	22-Sep-24
BW:	81
WW:	677

SKF DUNN'S TOTAL TENDER 161H
HRZN K318
HRZN H394

CE	BW	WW	YW	MK	CM	MW	ST	DOC	REA	MB	MPI	FPI	TPI	\$G
11	-0.4	73	131	29	8	158.7	14	15	0.41	0.61	92.47	162.46	194.46	0.13
BREED PERCENTILE RANKING PER EPD														
65	50	55	20	10	25	15	65	5	70	15	90	15	20	2
Breed %	56GV 43AN 1AR			OWNER:			Horizon Farms							

Balancer Homo Black Homo Polled
BRNS 496M

334

TMMW DESTINATION 82Y
RUR GUARDIAN 845E
ZJC MISS BLACK 845U

REG #:	1630635
BD:	27-Sep-24
BW:	84
WW:	596

JKGF FINAL FRONTIER C95
BRNS 979G
JDKG MISS TENDERLAND 102W

CE	BW	WW	YW	MK	CM	MW	ST	DOC	REA	MB	MPI	FPI	TPI	\$G
10	.1	72	110	16	8	91.4	13	8	.69	.55	106.92	147.60	194.41	0.1
BREED PERCENTILE RANKING PER EPD														
75	65	60	65	>95	25	95	80	>95	15	20	45	25	20	80
Breed %	75GV 25AN			OWNER:			Burns Gelbvieh							

BALANCER BULLS

Balancer Homo Black Homo Polled **335**
TMGC SB Legend 202M

G A R HIGH SECURITY JSF
IAND DUNN'S SAFE CRACKER 090J
 SKF DUNN'S MISS JACKPOT 572C

MR PAYWEIGHT A10E
TMGC SB Sugar Mama 176H
 TMGC SB SILENCE 128F

REG #:	1617504
BD:	27-Sep-24
BW:	70
WW:	606

CE	BW	WW	YW	MK	CM	MW	ST	DOC	REA	MB	MPI	FPI	TPI	\$G
12	-0.6	79	127	28	7	126	20	14	0.71	0.67	119.96	178.44	235.09	0.1
BREED PERCENTILE RANKING PER EPD														
55	50	30	30	15	45	60	3	15	15	10	15	5	3	10
Breed %		38GV 62AN			OWNER:		Stuecken Brothers							

Balancer Homo Black Homo Polled **339**
TMMW MR HEDGE FUND 155M

DEER VALLEY HEDGE FUND
DBRG MR HEDGE FUND 2355K
 DBRG MS OUTLOOK 468B

TMMW GOVENORS MR EXTRA 6018W
TMMW MISS GOVENOR 162B
 JBOB 5072N

REG #:	1641477
BD:	06-Oct-24
BW:	77
WW:	692

CE	BW	WW	YW	MK	CM	MW	ST	DOC	REA	MB	MPI	FPI	TPI	\$G
14	-2.2	69	96	22	8	121.6	16	12	0.53	0.28	108.34	118.32	152.87	0.02
BREED PERCENTILE RANKING PER EPD														
30	20	70	90	65	25	65	30	55	45	75	40	60	55	75
Breed %		66GV 34AN			OWNER:		Mulroy Farms, L.L.C.							

Balancer Homo Black Homo Polled **336**
HRZN M307

WFA FLYING H MR PRO 20G
SKF DUNN'S COMPLETE PRO 214J
 SKF DUNN'S MISS WHARTON 619D

GLM HASHTAG# H11
HRZN K301
 HRZN H306

REG #:	1616287
BD:	01-Oct-24
BW:	71
WW:	613

CE	BW	WW	YW	MK	CM	MW	ST	DOC	REA	MB	MPI	FPI	TPI	\$G
20	-3.3	61	90	28	12	99	23	11	0.52	0.52	133.18	104.21	177.74	0.02
BREED PERCENTILE RANKING PER EPD														
3	10	95	95	15	1	90	2	80	30	25	2	80	30	75
Breed %		67GV 33AN			OWNER:		Horizon Farms							

Balancer Homo Black Polled **340**
BVC 58M

TMGC SB Formula 12E
TMGC SB Barcelona 124H
 TMGC SB HILDA 44D

BAF OBJECTIVE 6346
RLS MISS 58C
 RLS TENDER ROCKET 55ZET

REG #:	1617435
BD:	09-Oct-24
BW:	81
WW:	509

CE	BW	WW	YW	MK	CM	MW	ST	DOC	REA	MB	MPI	FPI	TPI	\$G
15	-0.9	53	74	27	6	58.2	18	12	0.38	0.65	116.85	119.21	190.57	-0.01
BREED PERCENTILE RANKING PER EPD														
25	40	>95	>95	20	65	>95	10	55	75	10	20	60	20	95
Breed %		63GV 37AN			OWNER:		Flint Hills Gelbvieh							

Balancer Homo Black Homo Polled **337**
MTB BCC Black Balance 50M

DCH HILLE STOCK OPTIONS D410
JEB BCC PASS CODE K206 ET
 JEB BCC MISS NEVADA 26B

TMMW MR READY CASH 21G
MTB BCC MS CASH 34J
 JEB BCC MS COLONEL 1F

REG #:	1614747
BD:	03-Oct-24
BW:	70
WW:	509

CE	BW	WW	YW	MK	CM	MW	ST	DOC	REA	MB	MPI	FPI	TPI	\$G
16	-2	68	100	20	8	109.1	19	10	0.55	0.32	119.51	94.47	128.42	0.02
BREED PERCENTILE RANKING PER EPD														
15	20	75	85	85	25	80	5	90	40	65	15	90	70	75
Breed %		63GV 37AN			OWNER:		Burbank Cattle Company							

Balancer Homo Black Homo Polled **341**
NGCC M523

GMF FORTUNE 616D
HRZN FORTUNE H148
 HRZN D499

NGCC LUCKY 063WC
NGCC NG LEXUS E523
 JOSH LEXUS 9624A

REG #:	1611984
BD:	10-Oct-24
BW:	80
WW:	621

CE	BW	WW	YW	MK	CM	MW	ST	DOC	REA	MB	MPI	FPI	TPI	\$G
12	0.8	69	105	26	7	113.2	14	12	0.36	0.380	103.38	122.31	157.97	0.02
BREED PERCENTILE RANKING PER EPD														
55	80	70	75	30	45	80	65	55	80	50	60	55	50	75
Breed %		71GV 28AN 1XX			OWNER:		Narrow Gate Cattle							

Balancer Homo Black Homo Polled **338**
TMGC SB Coad 210M

JOB DANELL NAPOLEON 01E
TMGC SB COAD 245J ET
 DLW MS ELAINE 2005Z ET

JKGF CIVIL WAR E92
TMGC SB Paparazzi 177K
 TMGC SB Verbena 131H

REG #:	1617512
BD:	04-Oct-24
BW:	70
WW:	647

CE	BW	WW	YW	MK	CM	MW	ST	DOC	REA	MB	MPI	FPI	TPI	\$G
10	-0.7	71	112	26	9	121.1	18	12	0.72	0.53	103.3	153.15	195.49	0.04
BREED PERCENTILE RANKING PER EPD														
75	40	60	50	25	15	55	15	50	20	20	60	15	15	35
Breed %		78GV 22AN			OWNER:		Stuecken Brothers							



BALANCER BULLS

Balancer Homo Black Homo Polled
WWCF MAGNITUDE FRANCHISE M165J

342

KCF BENNETT SOUTHSIDE
 MEAD MAGNITUDE
 MEAD PRIMROSE N198

REG #:	1620091
BD:	10-Oct-24
BW:	85
WW:	554

MJBC FRANCHISE F806
 CKS MS FRANCHISE J57
 CKS MS ALUMNI G24

CE	BW	WW	YW	MK	CM	MW	ST	DOC	REA	MB	MPI	FPI	TPI	\$G		
12	0.3	89	141	32	10	167.4	8	14	0.96	0.42	103.79	158.35	169.96	0.03		
BREED PERCENTILE RANKING PER EPD																
55	70	10	10	2	10	>95	15	2	45	60	15	35	60			
Breed %		50GV 50AN			OWNER:		Weller Farms									

Balancer Homo Black Homo Polled
MTB BCC Black Balance 87M

345

DCH HILLE D453
 GLM HASHTAG# H11
 GLM W55

REG #:	1614779
BD:	15-Oct-24
BW:	72
WW:	548

SKF DUNNS ALLIED JACKPOT 111H
 MTB BCC MISS ALLIED 39K
 MTB BCC MISS ARNOLD 39C

CE	BW	WW	YW	MK	CM	MW	ST	DOC	REA	MB	MPI	FPI	TPI	\$G		
13	-0.3	82	122	21	8	132.7	17	14	0.6	0.55	116.79	130.56	168.83	-0.02		
BREED PERCENTILE RANKING PER EPD																
40	55	20	40	75	25	50	30	15	30	20	20	45	35	>95		
Breed %		74GV 25AN 1AR			OWNER:		Burbank Cattle Company									

Balancer Homo Black Homo Polled
MTB BCC Black Balance 73M

343

DMP F185
 TMMW MR ALLIED 69K
 TMMW MISS READY CASH 30F

REG #:	1614939
BD:	11-Oct-24
BW:	76
WW:	520

TMGC SB ARNOLD 225W
 MTB BCC MISS ARNOLD 39C
 MTB BCC MISS BALANCE 55A

CE	BW	WW	YW	MK	CM	MW	ST	DOC	REA	MB	MPI	FPI	TPI	\$G		
11	0.4	72	112	23	8	132.5	12	11	0.23	0.32	95.35	110.28	134.28	0.05		
BREED PERCENTILE RANKING PER EPD																
65	70	60	60	60	25	50	90	80	95	65	85	75	75	40		
Breed %		47GV 51AN 2AR			OWNER:		Burbank Cattle Company									

Balancer Homo Black Homo Polled
TMGC SB CACTUS 160M

346

TMMW DESTINATION 82Y
 BTBR SAGUARO 811F ET
 JEB BCC MISS OBJECTIVE 41W

REG #:	1617452
BD:	15-Oct-24
BW:	76
WW:	631

TMGC SB SILENT NIGHTS 2005B
 TMGC SB SILENCE 128F
 SKF DUNN'S MS OVERTIME 5C08

CE	BW	WW	YW	MK	CM	MW	ST	DOC	REA	MB	MPI	FPI	TPI	\$G		
11	-0.7	80	126	21	7	145.8	19	12	0.59	0.37	107.63	96.82	118.9	0.01		
BREED PERCENTILE RANKING PER EPD																
65	45	30	30	75	45	30	5	55	35	55	45	90	90	80		
Breed %		56GV 44AN			OWNER:		Stuecken Brothers									

Balancer Homo Black Homo Polled
RGCC Powercat 4106M

344

BTBR SAGUARO 8111F ET
 TMGC SB CACTUS 29H
 TMGC SB BLACKCAP FOCUS 05Y

REG #:	1619345
BD:	12-Oct-24
BW:	86
WW:	537

VRT LAZY TV WATCHMAN W021
 RGCC LADY CAT 633D
 RGCC LADY CAT 3Y

CE	BW	WW	YW	MK	CM	MW	ST	DOC	REA	MB	MPI	FPI	TPI	\$G		
6	-1.3	76	115	22	7	144.9	17	13	0.31	0.510	88.02	161.95	192.61	0.04		
BREED PERCENTILE RANKING PER EPD																
>95	35	45	55	65	45	30	20	30	85	25	95	15	20	50		
Breed %		47GV 53AN			OWNER:		RM Cattle									

Balancer Homo Black Homo Polled
DJZ 4M1

347

DEER VALLEY GROWTH FUND
 LAFINS GROWTH FUND 0677
 LAFINS GALAXIE 6878

REG #:	1642774
BD:	15-Oct-24
BW:	60
WW:	513

TMMW MR MONTANA 262E
 DJZ MISS 2K38
 DJZ 101G

CE	BW	WW	YW	MK	CM	MW	ST	DOC	REA	MB	MPI	FPI	TPI	\$G		
13	-1.7	84	135	26	9	147.2	14	12	0.25	0.28	112.95	139.23	168.41	0.09		
BREED PERCENTILE RANKING PER EPD																
10	25	15	15	30	15	30	65	55	90	75	30	30	35	15		
Breed %		38GV 62AN			OWNER:		Zimmerman Farms									



Balancer Homo Black Homo Polled
RDW 424M

348

TJB REBEL YELL 804F ET
 JGPG REBEL YELL 207K ET
 JGPG LADY GRANITE 321A ET

REG #:	1622559
BD:	18-Oct-24
BW:	77
WW:	661

NORG COMBAT READY D54
 RDW 952J
 RDW 603F

CE	BW	WW	YW	MK	CM	MW	ST	DOC	REA	MB	MPI	FPI	TPI	\$G		
11	0.9	72	104	29	6	149.4	17	9	0.66	0.210	97	139.51	156.79	0.06		
BREED PERCENTILE RANKING PER EPD																
65	80	60	80	10	65	25	20	>95	20	90	80	30	50	30		
Breed %		50GV 50AN			OWNER:		Rex Woods Farms									

BALANCER BULLS

Balancer Homo Black Homo Polled **349**
WWCF WWCF DANTE M141H

ERTL BARGAINING CHIP D677
JEB BCC BLACK BALANCE 70G
 JEB BCC MISS MATRIX 4W

REG #:	1620078
BD:	31-Oct-24
BW:	87
WW:	537

DMP F185
TMMW MISS ALLIED 215H
 TMMW GOV'S ADV MISS EXTRA 158Y

CE	BW	WW	YW	MK	CM	MW	ST	DOC	REA	MB	MPI	FPI	TPI	\$G
14	1.1	88	134	22	8	162.9	23	10	0.42	0.42	122.8	125.27	160.4	-0.01
BREED PERCENTILE RANKING PER EPD														
30	85	10	15	65	25	15	1	90	65	45	10	50	45	95
Breed %	48GV 49AN 3AR				OWNER:	Weller Farms								



Balancer Homo Black Homo Polled **350**
WWCF WWCF DAMIAN M126H

ERTL BARGAINING CHIP D677
JEB BCC BLACK BALANCE 70G
 JEB BCC MISS MATRIX 4W

REG #:	1620068
BD:	05-Nov-24
BW:	102
WW:	506

DMP F185
TMMW MISS ALLIED 146H
 TMMW MISS READY CASH 127F

CE	BW	WW	YW	MK	CM	MW	ST	DOC	REA	MB	MPI	FPI	TPI	\$G
9	1.7	69	102	23	6	117.6	18	14	0.38	0.49	99.05	116.68	152.38	0
BREED PERCENTILE RANKING PER EPD														
85	90	70	80	60	65	70	10	15	75	30	75	65	55	90
Breed %	44GV 54AN 2AR				OWNER:	Weller Farms								

Balancer Black Homo Polled **353**
MTB BCC Black Balance 100M

DCH HILLE STOCK OPTIONS D410
JEB BCC PASS CODE K206 ET
 JEB BCC MISS NEVADA 26B

REG #:	1614792
BD:	15-Nov-24
BW:	80
WW:	607

ERTL BARGAINING CHIP D677
MTB BCC MS CHIPPIE 46F
 BWF BRANDYWINE BIDEZIA 4123B

CE	BW	WW	YW	MK	CM	MW	ST	DOC	REA	MB	MPI	FPI	TPI	\$G
7	1.7	88	131	25	7	130.8	16	10	1	0.6	107.43	184.42	216.47	0
BREED PERCENTILE RANKING PER EPD														
95	90	10	20	40	45	50	30	90	1	15	45	3	10	90
Breed %	74GV 27AN				OWNER:	Burbank Cattle Company								

Balancer Homo Black Homo Polled **351**
JABR Gimli 208M

TEHAMA UPWARD Y238
TEHAMA TAHOE B767
 TEHAMA MARY BLACKBIRD Y684

REG #:	1612851
BD:	08-Nov-24
BW:	65
WW:	663

TMGC SB ARNOLD 225W
HCRX DIXIE 162J
 CVBG MABELINE 065B

CE	BW	WW	YW	MK	CM	MW	ST	DOC	REA	MB	MPI	FPI	TPI	\$G
19	-3.7	74	118	23	9	113.3	20	12	0.26	0.71	134.39	146.51	220.83	0.14
BREED PERCENTILE RANKING PER EPD														
4	5	50	45	60	15	75	3	55	90	2	25	10	15	2
Breed %	31GV 69AN				OWNER:	Hebron Christian Ranch								

Balancer Black Homo Polled **354**
DRCT Balance 664M

MOLITOR PLAYBOY 469-157
DJZ 48K
 DJZ 20C

REG #:	1624307
BD:	16-Nov-24
BW:	65
WW:	690

BWF BRANDYWINE CAVALIER 597C
JEB BCC MS CAVALIER 26H
 VWF MS XTREM X120

CE	BW	WW	YW	MK	CM	MW	ST	DOC	REA	MB	MPI	FPI	TPI	\$G
9	1.2	77	122	26	6	123.7	14	13	.13	.49	102.29	131.58	166.49	.02
BREED PERCENTILE RANKING PER EPD														
85	85	40	40	30	65	60	65	30	>95	30	65	40	40	75
Breed %	46GV 29AN 24AR 1XX				OWNER:	Burbank Cattle Company								

Balancer Homo Black Polled **352**
DJZ 4M12

DEER VALLEY GROWTH FUND
LAFINS GROWTH FUND 0677
 LAFINS GALAXIE 6878

REG #:	1642777
BD:	12-Nov-24
BW:	78
WW:	575

BWF BRANDYWINE ZACK 201Z
GMP GMPB18
 GMP WALNUT RIDGE 22U

CE	BW	WW	YW	MK	CM	MW	ST	DOC	REA	MB	MPI	FPI	TPI	\$G
10	-0.2	91	143	27	6	165	12	13	0.63	0.53	104.89	176.69	200.32	0.06
BREED PERCENTILE RANKING PER EPD														
75	55	5	10	20	65	10	90	30	25	20	55	5	15	30
Breed %	50GV 50AN				OWNER:	Zimmerman Farms								

Balancer Black Homo Polled **355**
HCRX Squanto 210M

TEHAMA UPWARD Y238
TEHAMA TAHOE B767
 TEHAMA MARY BLACKBIRD Y684

REG #:	1614094
BD:	23-Nov-24
BW:	75
WW:	620

VRT LAZY TV WATCHMAN W021
CVBG ASHLAND 077C
 CVBG CASEY JR 010W

CE	BW	WW	YW	MK	CM	MW	ST	DOC	REA	MB	MPI	FPI	TPI	\$G
14	-1.0	77	129	21	8	126.5	16	15	.48	.57	116.25	138.42	184.03	0.12
BREED PERCENTILE RANKING PER EPD														
30	40	40	25	75	25	55	30	5	55	15	20	35	25	3
Breed %	31GV 69AN				OWNER:	Hebron Christian Ranch								

BALANCER BULLS



Balancer Homo Black Homo Polled
SKF DUNN'S HIDDEN TREASURE 006N

359

DEER VALLEY HEDGE FUND
DBRG MR HEDGE FUND 2355K
 DBRG MS OUTLOOK 468B

REG #:	1636680
BD:	07-Jan-25
BW:	75
WW:	700

TAU MR. TREASURE 221J
SKF DUNN'S MISS TREASURE 345L
 SKF DUNN'S MISS HARRIET 0H10

CE	BW	WW	YW	MK	CM	MW	ST	DOC	REA	MB	MPI	FPI	TPI	\$G	
14	-1.5	82	133	28	9	157.2	13	14	0.41	0.52	111.09	176.6	216.4	0.08	
BREED PERCENTILE RANKING PER EPD															
30	30	20	20	15	15	20	80	15	70	25	35	5	10	20	
Breed %		50GV 50AN			OWNER:					Sandy Knoll Farms					

Balancer Homo Black Homo Polled
WWCF WWCF DRACO M163J

356

BNG OVERTIME 23Y
JEB BCC BLACK BALANCE 9G
 JEB BCC MISS MATRIX 5A

REG #:	1620090
BD:	17-Dec-24
BW:	89
WW:	664

MJBC FRANCHISE F806
CKS MS ALUMNI J54
 CKS MS EQUINOX G8

CE	BW	WW	YW	MK	CM	MW	ST	DOC	REA	MB	MPI	FPI	TPI	\$G	
13	0.4	77	119	26	5	100.6	14	15	0.75	0.31	119.56	128.97	163.49	0.01	
BREED PERCENTILE RANKING PER EPD															
40	70	40	45	30	80	90	65	5	10	70	15	45	45	80	
Breed %		75GV 25AN			OWNER:					Weller Farms					

Balancer Homo Black Homo Polled
SKF Dunn's Frontline 004N

360

HPCA VERCINGETORIX
LEACHMAN BATTLE G006K
 LCOC BLACKCAP DG096

REG #:	1636683
BD:	08-Jan-25
BW:	83
WW:	726

WAHL 4H ET
SKF DUNN'S MISS LAINEY 392L
 SKF DUNN'S MISS HOLE IN ONE 019H

CE	BW	WW	YW	MK	CM	MW	ST	DOC	REA	MB	MPI	FPI	TPI	\$G	
12	-0.2	93	149	28	6	160.8	17	14	0.68	0.9	119	194.37	243.49	0.08	
BREED PERCENTILE RANKING PER EPD															
55	55	3	4	15	65	15	20	15	20	1	15	2	2	20	
Breed %		50GV 50AN			OWNER:					Sandy Knoll Farms					

Balancer Homo Black Homo Polled
SKF DUNN'S NEW CAPITAL 002N

357

DEER VALLEY HEDGE FUND
DBRG MR HEDGE FUND 2355K
 DBRG MS OUTLOOK 468B

REG #:	1636677
BD:	05-Jan-25
BW:	73
WW:	740

SKF DUNN'S ALLIED 032E
SKF DUNN'S MS DIAMOND ALLIED 3L83
 SKF DUNN'S MISS BLACK DIAMOND 178J

CE	BW	WW	YW	MK	CM	MW	ST	DOC	REA	MB	MPI	FPI	TPI	\$G	
18	-2.7	79	121	31	10	155.1	14	14	0.44	0.41	119.2	142.43	180.21	0.06	
BREED PERCENTILE RANKING PER EPD															
10	15	30	40	4	10	20	65	15	65	45	15	30	25	30	
Breed %		50GV 50AN			OWNER:					Sandy Knoll Farms					

Balancer Homo Black Homo Polled
SKF DUNN'S SECURE INVESTMENT 008N

361

DEER VALLEY HEDGE FUND
DBRG MR HEDGE FUND 2355K
 DBRG MS OUTLOOK 468B

REG #:	1636684
BD:	08-Jan-25
BW:	77
WW:	698

G A R HIGH SECURITY JSF
SKF DUNN'S MS HIGH SECURITY 374L
 SKF DUNN'S MISS DESTINATION 728E

CE	BW	WW	YW	MK	CM	MW	ST	DOC	REA	MB	MPI	FPI	TPI	\$G	
16	-3.9	81	127	26	9	137.3	16	10	0.31	0.49	121.92	129.37	171.77	0.07	
BREED PERCENTILE RANKING PER EPD															
15	4	25	30	30	15	40	30	90	85	30	10	45	35	25	
Breed %		50GV 50AN			OWNER:					Sandy Knoll Farms					

Balancer Homo Black Homo Polled
SKF DUNN'S OPTIMUM RETURN 003N

358

DEER VALLEY HEDGE FUND
DBRG MR HEDGE FUND 2355K
 DBRG MS OUTLOOK 468B

REG #:	1636678
BD:	06-Jan-25
BW:	78
WW:	725

SKF DUNN OPTIMUS 031B
SKF DUNN'S MISS OPTIMUS 315L
 SKF MISS COMBAT ALLY 161J

CE	BW	WW	YW	MK	CM	MW	ST	DOC	REA	MB	MPI	FPI	TPI	\$G	
16	-1	82	120	30	9	150.7	13	12	0.41	0.72	118.03	166.12	214.37	0.02	
BREED PERCENTILE RANKING PER EPD															
15	40	20	40	10	15	25	80	55	70	4	15	10	10	75	
Breed %		50GV 50AN			OWNER:					Sandy Knoll Farms					

Balancer Homo Black Homo Polled
SKF DUNN'S NAME BRAND 010N

362

DEER VALLEY HEDGE FUND
DBRG MR HEDGE FUND 2355K
 DBRG MS OUTLOOK 468B

REG #:	1636686
BD:	10-Jan-25
BW:	88
WW:	749

SYDGEN BONUS 8084
IAN DUNN'S MISS JACKPOT BONUS 378L
 SKF DUNN'S MISS JACKPOT 572C

CE	BW	WW	YW	MK	CM	MW	ST	DOC	REA	MB	MPI	FPI	TPI	\$G	
10	0.1	90	141	32	6	165.5	8	12	1.1	0.44	98.08	197.01	207.59	0.08	
BREED PERCENTILE RANKING PER EPD															
75	65	10	10	2	65	10	10	55	1	40	75	2	10	20	
Breed %		50GV 50AN			OWNER:					Sandy Knoll Farms					

BALANCER BULLS

Balancer Homo Black Homo Polled **363** SKF DUNN'S BLUE CHIP 011N

DEER VALLEY HEDGE FUND
DBRG MR HEDGE FUND 2355K
DBRG MS OUTLOOK 468B

TAU MR. TREASURE 221J
SKF DUNN'S MISS TREASURE 360L
SKF DUNN'S MISS FOR JUSTICE 113J

REG #:	1636688
BD:	13-Jan-25
BW:	78
WW:	658

CE	BW	WW	YW	MK	CM	MW	ST	DOC	REA	MB	MPI	FPI	TPI	\$G
16	-1.6	80	127	29	7	157.5	16	13	0.17	0.45	115.04	122.05	156.64	0.07
BREED PERCENTILE RANKING PER EPD														
15	25	30	30	10	45	20	30	30	>95	35	25	55	50	25
Breed %		50GV 50AN			OWNER:		Sandy Knoll Farms							

Balancer Homo Black Homo Polled **367** SKF DUNN'S NIGHTWATCH 029N

HPCA VERCINGETORIX
IAND DUNN'S CELTIC FOX 051L
PRD DUNN'S MISS DEPARTURE 0H42

WFA FLYING H MR PRO 20G
SKF DUNN'S MISS KAYLA 295K
SKF DUNN'S MS SPECIAL FOCUS 313A

REG #:	1636710
BD:	27-Jan-25
BW:	70
WW:	634

CE	BW	WW	YW	MK	CM	MW	ST	DOC	REA	MB	MPI	FPI	TPI	\$G
21	-4.3	65	105	26	11	109.8	20	12	0.36	0.52	134.64	122.44	194.38	0.11
BREED PERCENTILE RANKING PER EPD														
2	3	85	75	30	3	80	3	55	80	25	2	55	20	5
Breed %		50GV 50AN			OWNER:		Sandy Knoll Farms							

Balancer Homo Black Homo Polled **364** SKF DUNN'S HIGH YIELD 016N

DEER VALLEY HEDGE FUND
DBRG MR HEDGE FUND 2355K
DBRG MS OUTLOOK 468B

SKF DUNN'S ALLIED JACKPOT 111H
SKF DUNN'S MISS LAURA 3L93
SKF DUNN'S MISS YERINGTON 0H44

REG #:	1636692
BD:	13-Jan-25
BW:	63
WW:	668

CE	BW	WW	YW	MK	CM	MW	ST	DOC	REA	MB	MPI	FPI	TPI	\$G
19	-5.5	64	98	26	10	94.3	15	11	-0.12	0.56	126.9	130.91	202.27	0
BREED PERCENTILE RANKING PER EPD														
4	1	90	90	30	10	95	45	80	>95	20	5	45	15	90
Breed %		50GV 50AN			OWNER:		Sandy Knoll Farms							

Balancer Homo Black Homo Polled **368** SKF DUNN'S NIGHT PROWLER 043N

HPCA VERCINGETORIX
IAND DUNN'S CELTIC FOX 051L
PRD DUNN'S MISS DEPARTURE 0H42

MLM MEYER'S MAGNITUDE 072H
SKF DUNN'S MISS KLARA 2K63
SKF DUNN'S MISS WHARTON 716E

REG #:	1636725
BD:	29-Jan-25
BW:	65
WW:	675

CE	BW	WW	YW	MK	CM	MW	ST	DOC	REA	MB	MPI	FPI	TPI	\$G
16	-1.7	86	136	27	12	164.9	13	11	0.56	0.82	116.59	189.78	242.41	0.05
BREED PERCENTILE RANKING PER EPD														
15	25	15	15	20	1	15	80	80	40	2	20	3	2	40
Breed %		50GV 50AN			OWNER:		Sandy Knoll Farms							

Balancer Homo Black Homo Polled **365** SKF DUNN'S DIVIDEND 019N

DEER VALLEY HEDGE FUND
DBRG MR HEDGE FUND 2355K
DBRG MS OUTLOOK 468B

TAU MR. TREASURE 221J
SKF DUNN'S MISS TREASURE 359L
SKF DUNN'S MISS JOANNA 191J

REG #:	1636695
BD:	13-Jan-25
BW:	77
WW:	724

CE	BW	WW	YW	MK	CM	MW	ST	DOC	REA	MB	MPI	FPI	TPI	\$G
18	-1.2	87	138	31	12	161.8	21	12	0.44	0.33	136.81	124.41	167.61	0.05
BREED PERCENTILE RANKING PER EPD														
10	35	10	15	4	1	15	1	55	65	65	1	50	40	40
Breed %		52GV 48AN			OWNER:		Sandy Knoll Farms							

Balancer Homo Black Homo Polled **369** SKF DUNN'S Normandy 047N

HPCA VERCINGETORIX
LEACHMAN BATTLE G006K
LCOC BLACKCAP DG096

SKF DUNN'S DESTINY 056F
SKF DUNN'S MISS DESTINY 232K
SKF DUNN'S MISS GOOD TIMES 984G

REG #:	1636729
BD:	30-Jan-25
BW:	80
WW:	638

CE	BW	WW	YW	MK	CM	MW	ST	DOC	REA	MB	MPI	FPI	TPI	\$G
16	-0.2	87	146	24	10	147.7	20	13	0.51	0.98	131.54	187.7	260.22	0.12
BREED PERCENTILE RANKING PER EPD														
15	55	10	5	45	10	25	3	30	50	1	2	3	1	3
Breed %		50GV 50AN			OWNER:		Sandy Knoll Farms							

Balancer Homo Black Homo Polled **366** GMF GMF 57N

SQUARE B TRUE NORTH 8052
BEAR MTN NORTH STAR
BEAR MTN FOREVER LADY 0579

RWG HORSE POWER 0311
RWG GOODNIGHT L403
RWG GOODNIGHT G508

REG #:	1641213
BD:	21-Jan-25
BW:	88
WW:	636

CE	BW	WW	YW	MK	CM	MW	ST	DOC	REA	MB	MPI	FPI	TPI	\$G
12	-0.1	91	148	23	6	182.6	14	12	0.59	0.41	102.71	134.18	146	0.07
BREED PERCENTILE RANKING PER EPD														
55	60	5	4	60	65	4	65	55	35	45	60	40	65	25
Breed %		50GV 50AN			OWNER:		Meng Farms Cattle Company							



BALANCER BULLS

Balancer Homo Black Homo Polled **370**
SKF DUNN'S MARKET MAKER 050N

G A R SUNRISE
 G A R SUNBEAM
 G A R INGENUITY 3132

REG #:	1636730
BD:	03-Feb-25
BW:	81
WW:	708

DCH HILLE STOCK OPTIONS D410
SKF DUNN'S MISS STOCK OPTIONS 149J
 SKF DUNN'S MS DESTINATION 858F ET

CE	BW	WW	YW	MK	CM	MW	ST	DOC	REA	MB	MPI	FPI	TPI	\$G
18	-0.5	89	145	28	10	139.8	17	12	0.98	0.63	140.05	167.21	221.82	0.05
BREED PERCENTILE RANKING PER EPD														
10	50	10	10	15	10	40	20	55	1	10	1	10	10	40
Breed %		50GV 50AN			OWNER:		Sandy Knoll Farms							

Balancer Black Polled **373**
SKF DUNN'S NIGHTHAWK 083N

HPCA VERCINGETORIX
IAND DUNN'S CELTIC FOX 051L
 PRD DUNN'S MISS DEPARTURE 0H42

REG #:	1636764
BD:	16-Feb-25
BW:	81
WW:	603

SKF DUNN'S ALLIED JACKPOT 111H
SKF DUNN'S MISS KRISTEN 2K38
 SKF DUNN'S MISS WHARTON 696D

CE	BW	WW	YW	MK	CM	MW	ST	DOC	REA	MB	MPI	FPI	TPI	\$G
21	-3.9	68	109	25	11	106.7	15	15	0.37	0.53	130.21	135.23	201.92	0.07
BREED PERCENTILE RANKING PER EPD														
2	4	75	70	40	3	85	45	5	75	20	3	35	15	25
Breed %		53GV 47AN			OWNER:		Sandy Knoll Farms							

Balancer Black Homo Polled **371**
SKF DUNN'S BELFAST 062N

HPCA VERCINGETORIX
IAND DUNN'S CELTIC FOX 051L
 PRD DUNN'S MISS DEPARTURE 0H42

REG #:	1636744
BD:	09-Feb-25
BW:	62
WW:	674

TMMW MR YERINGTON 84 B
SKF DUNN'S MISS KORY 2K53
 SKF DUNN'S MS WATCHMAN 501C

CE	BW	WW	YW	MK	CM	MW	ST	DOC	REA	MB	MPI	FPI	TPI	\$G
19	-1.9	87	141	24	9	152.4	13	13	0.63	0.68	129.37	174.44	225.82	0.09
BREED PERCENTILE RANKING PER EPD														
4	20	10	10	45	15	20	80	30	25	10	3	10	5	15
Breed %		50GV 50AN			OWNER:		Sandy Knoll Farms							

Balancer Homo Black Homo Polled **374**
SKF DUNN'S POKER FACE 079N

G A R SUNRISE
G A R SUNBEAM
 G A R INGENUITY 3132

REG #:	1636761
BD:	17-Feb-25
BW:	88
WW:	696

GLAG ADKINS JACKPOT 906W
SKF DUNN'S MISS JACKPOT 645D
 SKF DUNN'S MISS GRANITE 352A

CE	BW	WW	YW	MK	CM	MW	ST	DOC	REA	MB	MPI	FPI	TPI	\$G
15	-0.4	82	140	30	9	138.6	16	10	0.93	0.84	121.83	178.92	236.92	0.06
BREED PERCENTILE RANKING PER EPD														
25	50	20	10	10	15	40	30	90	2	2	10	5	3	30
Breed %		50GV 50AN			OWNER:		Sandy Knoll Farms							

Balancer Homo Black Homo Polled **372**
BVC MR 405N

TMGC SB Formula 12E
TMGC SB Barcelona 215K
 TMGC SB OPAL 163F

REG #:	1636596
BD:	15-Feb-25
BW:	77
WW:	681

K C F BENNETT EXPONENTIAL
BVC MISS EXPONENTIAL FIZZLE 52L
 BVC MS EXCITEMENT 58F ET

CE	BW	WW	YW	MK	CM	MW	ST	DOC	REA	MB	MPI	FPI	TPI	\$G
17	-0.9	84	132	29	8	160.8	16	13	0.45	0.85	121.23	204.71	265.08	0.07
BREED PERCENTILE RANKING PER EPD														
10	40	15	20	10	25	15	30	60	1	10	1	1	1	25
Breed %		51GV 49AN			OWNER:		Bryce Family Farm							

Balancer Homo Black Homo Polled **375**
SKF DUNN'S STEAMROLLER 092N

HCC WHITEWATER 9010
BTBR BTBR CASCADE 2291 ET
 BTBR MS BLACK CROSS 5130

REG #:	1636773
BD:	19-Feb-25
BW:	75
WW:	630

ABF SKF ZANDER 2001Z
SKF DUNN'S MISS ZANDER 6D67
 SKF DUNN'S MISS SANDY 911W

CE	BW	WW	YW	MK	CM	MW	ST	DOC	REA	MB	MPI	FPI	TPI	\$G
23	-6.2	68	114	31	13	139.8	15	12	0.43	0.9	127.56	173.35	258.17	0.03
BREED PERCENTILE RANKING PER EPD														
1	1	75	55	4	1	40	45	55	65	1	4	10	1	60
Breed %		50GV 44AN 6AR			OWNER:		Sandy Knoll Farms							



Balancer Homo Black Homo Polled **376**
BVC 54N

TMMW HOLE IN ONE 93D
DRGF 13H
 DRGF 708E

REG #:	1628329
BD:	25-Feb-25
BW:	90
WW:	882

BALDRIDGE COMPASS C041
BVC 67F
 BVC MISS 55D

CE	BW	WW	YW	MK	CM	MW	ST	DOC	REA	MB	MPI	FPI	TPI	\$G
13	1	86	131	33	9	146.3	18	14	0.72	0.37	123.68	145.42	180.05	0.06
BREED PERCENTILE RANKING PER EPD														
40	85	15	20	2	15	30	10	15	15	55	10	25	25	30
Breed %		52GV 48AN			OWNER:		Flint Hills Gelbvieh							

BALANCER BULLS

Balancer Homo Black Homo Polled **377**
BVC MR 409N

TMGC SB Formula 12E
 TMGC SB Barcelona 215K
 TMGC SB OPAL 163F

BVC MR BALANCE 516E
BVC 56H
 BVC GOVERNORS LINE 315Y

REG #:	1636600
BD:	26-Feb-25
BW:	90
WW:	715

CE	BW	WW	YW	MK	CM	MW	ST	DOC	REA	MB	MPI	FPI	TPI	\$G
11	-0.7	78	118	30	6	137.8	13	12	0.9	0.58	102.32	172.22	204.7	0.04
BREED PERCENTILE RANKING PER EPD														
65	45	35	45	10	65	40	80	55	3	15	65	10	15	50
Breed %		70GV 30AN			OWNER:					Bryce Family Farm				

Balancer Black Homo Polled **381**
SKF Dunn's BLACKTHORN 160N

HPCA VERCINGETORIX
IAND DUNN'S CELTIC LARAX 107K
 SKF DUNN'S MISS JACKPOT 572C

SKF DUNN OPTIMUS 031B
SKF DUNN'S MISS OPTIMUS 925G
 SKF DUNN'S MISS HARDWARE 642D

REG #:	1636864
BD:	28-Feb-25
BW:	71
WW:	820

CE	BW	WW	YW	MK	CM	MW	ST	DOC	REA	MB	MPI	FPI	TPI	\$G
13	-0.3	95	142	31	8	200.4	14	17	0.52	0.79	109.84	194.42	226.72	0.11
BREED PERCENTILE RANKING PER EPD														
40	55	2	10	4	25	1	65	2	45	2	40	2	5	5
Breed %		50GV 47AN 3AR			OWNER:					Sandy Knoll Farms				

Balancer Homo Black Homo Polled **378**
SKF Dunn's NUCLEUS 153N

HPCA VERCINGETORIX
IAND DUNN'S CELTIC LARAX 107K
 SKF DUNN'S MISS JACKPOT 572C

K C F BENNETT ABSOLUTE
SKF DUNN'S MISS ABSOLUTE 803F
 SKF DUNN'S MISS SAM 674D

REG #:	1636857
BD:	27-Feb-25
BW:	77
WW:	793

CE	BW	WW	YW	MK	CM	MW	ST	DOC	REA	MB	MPI	FPI	TPI	\$G
17	-1.6	92	141	31	11	177.1	15	16	1.15	0.6	127.65	186	226.3	0.11
BREED PERCENTILE RANKING PER EPD														
10	25	4	10	4	3	5	45	3	1	15	4	3	5	5
Breed %		50GV 50AN			OWNER:					Sandy Knoll Farms				

Balancer Homo Black Homo Polled **382**
SKF Dunn's BLACKROCK 163N

DEER VALLEY HEDGE FUND
DBRG MR HEDGE FUND 2355K
 DBRG MS OUTLOOK 468B

DBRG MR NEVADA 7165E ET
SKF DUNN'S MISS BLACK SANDY 0H04
 SKF DUNN'S MISS UPPER LEVEL 626D ET

REG #:	1636866
BD:	01-Mar-25
BW:	69
WW:	786

CE	BW	WW	YW	MK	CM	MW	ST	DOC	REA	MB	MPI	FPI	TPI	\$G
16	-1.1	80	123	35	9	143.1	16	12	0.12	0.59	124.24	128.88	177.45	0.03
BREED PERCENTILE RANKING PER EPD														
15	35	30	35	1	15	35	30	55	95	15	10	45	30	60
Breed %		50GV 50AN			OWNER:					Sandy Knoll Farms				

Balancer Homo Black Homo Polled **379**
SKF Dunn's LEVEL UP 156N

SYDGEN ENHANCE
MSHP SMOKEYS ENHANCE 162H
 MSHP DESTINATION 162E

SKF DUNN'S 2ND NEW LEVEL 071D ET
PRD DUNN'S MISS LEVEL TRACK 0H09
 PRD DUNN'S MS FAST TRACK 869F

REG #:	1636860
BD:	27-Feb-25
BW:	77
WW:	776

CE	BW	WW	YW	MK	CM	MW	ST	DOC	REA	MB	MPI	FPI	TPI	\$G
18	-1.9	71	121	25	10	147.9	22	14	0.27	0.55	121.59	129.79	186.06	0.1
BREED PERCENTILE RANKING PER EPD														
10	20	65	40	40	10	25	1	15	90	20	10	45	25	10
Breed %		50GV 50AN			OWNER:					Sandy Knoll Farms				

Balancer Homo Black Homo Polled **383**
BVC MR 408N

TMGC SB Formula 12E
TMGC SB Barcelona 215K
 TMGC SB OPAL 163F

BVC MR BALANCE 516E
BVC SUZETTE 54K
 BVC KAISER OBJECTIVE 57B

REG #:	1636603
BD:	02-Mar-25
BW:	89
WW:	683

CE	BW	WW	YW	MK	CM	MW	ST	DOC	REA	MB	MPI	FPI	TPI	\$G
10	1.1	78	116	32	8	139.6	20	13	1	0.43	108.89	161.03	194.19	0.01
BREED PERCENTILE RANKING PER EPD														
75	85	35	50	2	25	40	3	30	1	40	40	15	20	80
Breed %		66GV 34AN			OWNER:					Bryce Family Farm				

Balancer Homo Black Homo Polled **380**
SKF Dunn's STEALTH BOMBER 157N

HPCA VERCINGETORIX
IAND DUNN'S CELTIC LARAX 107K
 SKF DUNN'S MISS JACKPOT 572C

KCF BENNETT B29
SKF DUNN'S MISS B29 BOMBER 912G
 SKF DUNN'S MISS FOCUSED 7E13

REG #:	1636861
BD:	28-Feb-25
BW:	74
WW:	661

CE	BW	WW	YW	MK	CM	MW	ST	DOC	REA	MB	MPI	FPI	TPI	\$G
12	-1.7	87	136	33	6	171.9	16	14	1.21	0.44	107.48	195.22	217.32	0.03
BREED PERCENTILE RANKING PER EPD														
55	25	10	15	2	65	10	30	15	1	40	45	2	10	60
Breed %		50GV 50AN			OWNER:					Sandy Knoll Farms				

Balancer Black Homo Polled **384**
SKF Dunn's DRAFT DAY 164N

OVER DRAFT PICK 413D
SWW FIRST ROUND PICK J19
 MLG MEADOWLARK WILMA 430B

BRNS SKF BURNS DOUBLETIME 1657D
SKF DUNN'S MISS DOUBLETIME 0H24
 SKF DUNN'S MS SPECIAL FOCUS 384A

REG #:	1636867
BD:	03-Mar-25
BW:	82
WW:	774

CE	BW	WW	YW	MK	CM	MW	ST	DOC	REA	MB	MPI	FPI	TPI	\$G
10	1	88	142	26	6	183.4	14	14	0.6	0.31	95.52	140.54	144.84	0.06
BREED PERCENTILE RANKING PER EPD														
75	85	10	10	30	65	4	65	15	30	70	80	30	65	30
Breed %		50GV 25AN 25AR			OWNER:					Sandy Knoll Farms				

BALANCER BULLS

Balancer Black Homo Polled **385**
SKF **Dunn's RIPTIDE 166N**

HCC WHITEWATER 9010
BTBR BTBR CASCADE 2291 ET
 BTBR MS BLACK CROSS 5130

DCH BIG ANDY D672
EGL EGL JOSLYN H020
 EGL JOSLYN F594

REG #:	1636868
BD:	03-Mar-25
BW:	77
WW:	789

CE	BW	WW	YW	MK	CM	MW	ST	DOC	REA	MB	MPI	FPI	TPI	\$G
17	-1	87	130	28	12	180.1	16	12	0.96	0.65	119.85	221.42	272.22	-0.01
BREED PERCENTILE RANKING PER EPD														
10	40	10	20	15	1	4	30	55	2	10	15	1	1	95
Breed %		60GV 39AN 1AR			OWNER:		Sandy Knoll Farms							

Balancer Homo Black Polled **389**
SKF **DUNN'S MARGIN CALL 121N**

DEER VALLEY HEDGE FUND
DBRG MR HEDGE FUND 3215L
 DBRG MS FH TRACTION 774E

K C F BENNETT ABSOLUTE
SKF DUNN'S MS ABSOLUTE 534C
 SKF DUNN'S MISS SHOGUN 221Z

REG #:	1636825
BD:	06-Mar-25
BW:	89
WW:	657

CE	BW	WW	YW	MK	CM	MW	ST	DOC	REA	MB	MPI	FPI	TPI	\$G
10	-1.1	81	131	29	7	139.1	13	11	0.76	0.53	105.81	163.11	193.92	0.07
BREED PERCENTILE RANKING PER EPD														
75	35	25	20	10	45	40	80	80	10	20	50	10	20	25
Breed %		50GV 50AN			OWNER:		Sandy Knoll Farms							

Balancer Homo Black Homo Polled **386**
SKF **Dunn's STONEWALL 167N**

HPCA VERCINGETORIX
IAND DUNN'S CELTIC LARAX 107K
 SKF DUNN'S MISS JACKPOT 572C

SCHIEFELBEIN ALLIED 514
SKF DUNN'S MISS ALLIED 068H
 SKF DUNN'S MISS BRENDA 4B57

REG #:	1636869
BD:	04-Mar-25
BW:	72
WW:	733

CE	BW	WW	YW	MK	CM	MW	ST	DOC	REA	MB	MPI	FPI	TPI	\$G
20	-4.3	79	121	27	10	121.5	16	15	0.75	0.84	137.43	181.07	256.07	0.09
BREED PERCENTILE RANKING PER EPD														
3	3	30	40	20	10	65	30	5	10	2	1	4	1	15
Breed %		50GV 50AN			OWNER:		Sandy Knoll Farms							

Balancer Homo Black Homo Polled **390**
SKF **Dunn's IRISHMAN 170N**

HPCA VERCINGETORIX
IAND DUNN'S CELTIC LARAX 107K
 SKF DUNN'S MISS JACKPOT 572C

BRNS SKF BURNS DOUBLETIME 1657D
SKF DUNN'S MISS DOUBLETIME 0H23
 SKF DUNN'S MISS SAFEGUARD 463B

REG #:	1636871
BD:	08-Mar-25
BW:	77
WW:	790

CE	BW	WW	YW	MK	CM	MW	ST	DOC	REA	MB	MPI	FPI	TPI	\$G
14	-2.2	87	144	28	4	179.5	17	12	0.97	0.64	110.32	180.85	210.79	0.11
BREED PERCENTILE RANKING PER EPD														
30	20	10	10	15	90	5	20	55	2	10	35	4	10	5
Breed %		50GV 50AN			OWNER:		Sandy Knoll Farms							

Balancer Black Homo Polled **387**
SKF **Dunn's WATERMARK 168N**

HCC WHITEWATER 9010
BTBR CASCADE 2291 ET
 BTBR MS BLACK CROSS 5130

K C F BENNETT ABSOLUTE
SKF DUNN'S MISS ABSOLUTE 702E
 SKF DUNN'S MS CAMILLE 5C04

REG #:	1636916
BD:	04-Mar-25
BW:	76
WW:	749

CE	BW	WW	YW	MK	CM	MW	ST	DOC	REA	MB	MPI	FPI	TPI	\$G
22	-3.7	77	125	25	13	153.5	21	12	1.12	0.56	136.81	195.56	265.27	0.07
BREED PERCENTILE RANKING PER EPD														
1	5	40	30	40	1	20	1	55	1	20	1	2	1	25
Breed %		50GV 50AN			OWNER:		Sandy Knoll Farms							

Balancer Homo Black Homo Polled **391**
SKF **Dunn's CELTIC CROSS 171N**

HPCA VERCINGETORIX
IAND DUNN'S CELTIC LARAX 107K
 SKF DUNN'S MISS JACKPOT 572C

DMS STUCKY'S TRUSTEE
SKF DUNN'S MISS TRUSTEE 671D
 SKF DUNN'S MS TALETTA 7T07

REG #:	1636917
BD:	08-Mar-25
BW:	78
WW:	738

CE	BW	WW	YW	MK	CM	MW	ST	DOC	REA	MB	MPI	FPI	TPI	\$G
20	-4.1	74	107	27	9	126.8	19	14	0.72	0.69	132.46	187.67	262.37	0.02
BREED PERCENTILE RANKING PER EPD														
3	3	50	70	20	15	55	5	15	15	10	2	3	1	75
Breed %		50GV 44AN 6AR			OWNER:		Sandy Knoll Farms							

Balancer Black Homo Polled **388**
SKF **Dunn's TIDE RIDER 169N**

HCC WHITEWATER 9010
BTBR CASCADE 2291 ET
 BTBR MS BLACK CROSS 5130

TMMW MR YERINGTON 84 B
SKF DUNN'S MISS YERINGTON 088H
 SKF DUNN'S MISS WHARTON 310A

REG #:	1636870
BD:	04-Mar-25
BW:	73
WW:	670

CE	BW	WW	YW	MK	CM	MW	ST	DOC	REA	MB	MPI	FPI	TPI	\$G
20	-3.8	73	119	27	12	162.2	14	10	0.71	0.44	115.58	129.42	169.06	-0.01
BREED PERCENTILE RANKING PER EPD														
3	4	55	45	20	1	15	65	90	15	40	20	45	35	95
Breed %		52GV 48AN			OWNER:		Sandy Knoll Farms							

Balancer Homo Black Homo Polled **392**
SKF **Dunn's GUINNESS 224N**

HPCA VERCINGETORIX
IAND DUNN'S CELTIC LARAX 107K
 SKF DUNN'S MISS JACKPOT 572C

JJNR READY CASH B52C
SKF DUNN'S MISS READYWARE 952G
 SKF DUNN'S MS LETHAL HARDWARE 616D

REG #:	1636908
BD:	08-Mar-25
BW:	75
WW:	724

CE	BW	WW	YW	MK	CM	MW	ST	DOC	REA	MB	MPI	FPI	TPI	\$G
15	-1	83	126	30	9	156.3	15	14	1.06	0.72	117.65	189.53	235.38	0.07
BREED PERCENTILE RANKING PER EPD														
25	40	20	30	10	15	20	45	15	1	4	20	3	3	25
Breed %		50GV 50AN			OWNER:		Sandy Knoll Farms							

BALANCER BULLS

Balancer Homo Black Homo Polled **393**
SKF **Dunn's JAMESON 220N**

HPCA VERGINGETORIX
IAND DUNN'S CELTIC LARAX 107K
 SKF DUNN'S MISS JACKPOT 572C

BNG OVERTIME 23Y
SKF DUNN'S MISS OVERTIME 780E
 SKF DUNN'S MS IN FOCUS 205Z

REG #:	1636904
BD:	11-Mar-25
BW:	81
WW:	673

CE	BW	WW	YW	MK	CM	MW	ST	DOC	REA	MB	MPI	FPI	TPI	\$G
16	-1.7	76	120	29	8	157.5	22	14	0.87	0.77	117.99	189.32	249.43	0.1
BREED PERCENTILE RANKING PER EPD														
15	25	45	40	10	25	20	1	15	4	3	15	3	2	10
Breed %		50GV 50AN			OWNER:		Sandy Knoll Farms							



Balancer Homo Black Homo Polled **394**
SKF **Dunn's LUCK OF THE IRISH 225N**

HPCA VERGINGETORIX
IAND DUNN'S CELTIC LARAX 107K
 SKF DUNN'S MISS JACKPOT 572C

SKF DUNN'S 2ND NEW LEVEL 071D ET
SKF DUNN'S MS BLACK SANDY 8F97
 SKF DUNN'S MISS BLACK SANDY 6D65

REG #:	1636909
BD:	12-Mar-25
BW:	71
WW:	711

CE	BW	WW	YW	MK	CM	MW	ST	DOC	REA	MB	MPI	FPI	TPI	\$G
19	-1.1	81	130	28	9	147.7	17	12	0.63	0.68	129.13	158.18	214.68	0.1
BREED PERCENTILE RANKING PER EPD														
4	35	25	20	15	15	25	20	55	25	10	3	15	10	10
Breed %		63GV 37AN			OWNER:		Sandy Knoll Farms							

Balancer Homo Black Homo Polled **397**
DJZ **4M6**

DEER VALLEY GROWTH FUND
LAF LINS GROWTH FUND 0677
 LAF LINS GALAXIE 6878

TMMW HOLE IN ONE 93D
DJZ 114F
 RUR MOLLIE

REG #:	1642775
BD:	05-Nov-25
BW:	65
WW:	560

CE	BW	WW	YW	MK	CM	MW	ST	DOC	REA	MB	MPI	FPI	TPI	\$G
18	-3.1	75	113	31	10	101.9	23	11	0.24	0.53	144.07	120.03	189.97	0.04
BREED PERCENTILE RANKING PER EPD														
10	10	50	60	4	10	90	1	80	95	20	1	60	20	50
Breed %		41GV 59AN			OWNER:		Zimmerman Farms							

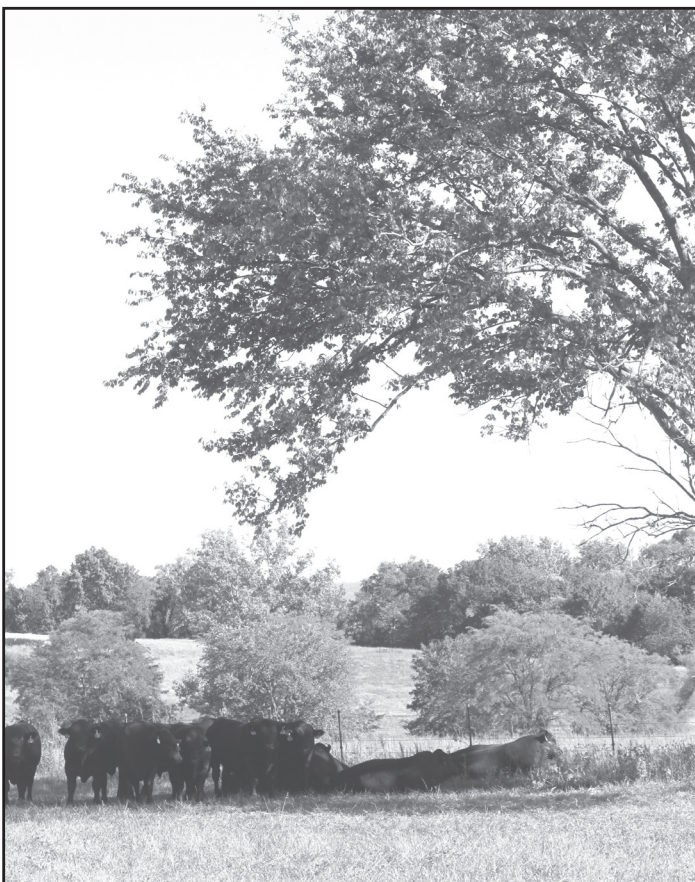
Balancer Black Homo Polled **395**
SKF **Dunn's MCGREGOR 226N**

HPCA VERGINGETORIX
IAND DUNN'S CELTIC LARAX 107K
 SKF DUNN'S MISS JACKPOT 572C

TMMW MR YERINGTON 84 B
SKF DUNN'S MISS YERRINGTON 8F61
 SKF DUNN'S MISS HAULER 017X

REG #:	1636910
BD:	15-Mar-25
BW:	87
WW:	814

CE	BW	WW	YW	MK	CM	MW	ST	DOC	REA	MB	MPI	FPI	TPI	\$G
15	-2.1	84	130	28	6	159.1	13	15	0.53	0.9	113.37	192.07	245.08	0.04
BREED PERCENTILE RANKING PER EPD														
25	20	15	20	15	65	15	80	5	45	1	25	2	2	50
Breed %		50GV 50AN			OWNER:		Sandy Knoll Farms							



Balancer Homo Black Homo Polled **396**
BVC **MR 424N**

TMGC SB Formula 12E
TMGC SB Barcelona 215K
 TMGC SB OPAL 163F

BVC MR BALANCE 516E
BVC 56K
 BVC 67F

REG #:	1636617
BD:	12-Apr-25
BW:	88
WW:	793

CE	BW	WW	YW	MK	CM	MW	ST	DOC	REA	MB	MPI	FPI	TPI	\$G
10	2.8	89	131	35	5	157.8	15	12	1.16	0.47	109.04	165.23	181.65	0.02
BREED PERCENTILE RANKING PER EPD														
75	>95	10	20	1	80	20	45	55	1	35	40	10	25	75
Breed %		62GV 38AN			OWNER:		Bryce Family Farm							

GELBIEH BULLS

About Gelbvieh Bulls

Each of the Gelbvieh bulls is listed separately in the catalog with their own individual performance and pedigree information. They are all registered with the American Gelbvieh Association. The EPD's are the most current provided by the Gelbvieh Assoc.

The Average EPD's for Gelbvieh bulls as of 2/11/26:
 CE:12 BW: 0. WW: 72 YW: 107 MK: 23 CM: 6
 ST: 16 DOC: 12 CW: 32 REA: 0.62 MB: .23 MW:122
 MPI:105 FPI: 105 TPI: 127 \$G: 0

PC 79% Homo Black Homo Polled
BVC MR 423R

401

TMGC SB Formula 12E
 TMGC SB Barcelona 124H
 TMGC SB HILDA 44D

RLS FLINT HILLS 38F
BVC MS JUSTICE 252K
 BVC MISS 52C

REG #:	1636616
BD:	12-Apr-25
BW:	82
WW:	714

CE	BW	WW	YW	MK	CM	MW	ST	DOC	REA	MB	MPI	FPI	TPI	\$G
12	-0.7	72	103	26	5	92.3	16	12	0.83	0.66	116.83	179.73	239.24	-0.01
BREED PERCENTILE RANKING PER EPD														
50	40	55	70	25	75	90	35	50	10	10	20	3	2	80
Breed %		79GV 21AN					OWNER:		Bryce Family Farm					

PC 81% Homo Black Homo Polled
HRZN M352

398

CCROC AROLINA LEVERAGE 3214A
 DCH HILLE STOCK OPTIONS D410
 DCH HILLE B189 ET

MLLC M/L ADVANTAGE
HRZN E305
 HRZN C248

REG #:	1616318
BD:	18-Oct-24
BW:	89
WW:	580

CE	BW	WW	YW	MK	CM	MW	ST	DOC	REA	MB	MPI	FPI	TPI	\$G
12	0.8	83	122	21	7	119.4	20	10	0.49	0.48	123.56	139.13	183.78	0.02
BREED PERCENTILE RANKING PER EPD														
50	75	15	30	75	40	60	3	90	60	25	10	25	20	55
Breed %		81GV 19AN					OWNER:		Horizon Farms					

PB Gelbvieh Homo Black Homo Polled
GMF 462M

402

CCRO CAROLINA LEVERAGE 3214A
WAHL 004H ET
 FHG FLYING H MS LEGACY 48Y

DLGO AMERICAN OUTLAW F015
GMF MENG 133J
 GMF MENG 57C

REG #:	1612996
BD:	28-Aug-24
BW:	78
WW:	503

CE	BW	WW	YW	MK	CM	MW	ST	DOC	REA	MB	MPI	FPI	TPI	\$G
9	-0.1	81	118	22	6	129.4	17	15	0.69	0.61	108.38	168.33	206.5	-0.03
BREED PERCENTILE RANKING PER EPD														
80	45	15	25	60	50	30	30	4	35	2	45	1	1	85
Breed %		94GV 6AN					OWNER:		Meng Farms Cattle Company					

PC 81% Homo Black Homo Polled
GMF GMF 56N

399

CCRO CAROLINA LEVERAGE 3214A
WAHL 4H ET
 FHG FLYING H MS LEGACY 48Y

LWHF DIRECT IMPACT 568Z
GMF MENG 039H
 GMF MENG 83F

REG #:	1641199
BD:	20-Jan-25
BW:	69
WW:	644

CE	BW	WW	YW	MK	CM	MW	ST	DOC	REA	MB	MPI	FPI	TPI	\$G
18	-2.9	83	126	24	9	131.5	23	11	0.28	0.58	142.87	128.17	190.4	-0.01
BREED PERCENTILE RANKING PER EPD														
10	10	15	25	45	15	40	1	75	90	15	1	35	15	80
Breed %		81GV 19AN					OWNER:		Meng Farms Cattle Company					

81% Gelbvieh Homo Black Homo Polled
RUR Rockefeller 12M

403

NGCC NG VISION F182
NGCC J300
 NGCC NG MOLLY F30

DCH HILLE STOCK OPTIONS D410
RUR BETSY 12K
 MTB BCC MISS OPTIMUS 12E

REG #:	1614424
BD:	18-Oct-24
BW:	73
WW:	630

CE	BW	WW	YW	MK	CM	MW	ST	DOC	REA	MB	MPI	FPI	TPI	\$G
12	-1.3	84	121	24	7	122.2	18	12	0.61	0.50	123.55	144.78	185.16	0
BREED PERCENTILE RANKING PER EPD														
50	30	15	30	45	40	15	15	50	35	20	10	20	20	75
Breed %		81GV 18AN 1XX					OWNER:		Rockin'-U-Ranch					

PC 75% Homo Black Homo Polled
DRGF 465M

400

DDGR RESILIENT 275D
GMF 034H
 GMF MENG 57C

HRZN H182
DRGF 244K
 DRGF 450B

REG #:	1630422
BD:	15-Oct-24
BW:	66
WW:	618

CE	BW	WW	YW	MK	CM	MW	ST	DOC	REA	MB	MPI	FPI	TPI	\$G
10	1.4	79	117	26	4	138.5	17	14	0.75	0.19	103.1	111.46	120.67	0.01
BREED PERCENTILE RANKING PER EPD														
75	85	30	40	25	90	30	25	15	15	80	60	60	80	65
Breed %		77GV 23AN					OWNER:		Duck River Gelbvieh					

PB Gelbvieh Black Homo Polled
TMGC SB Substantial 258M

404

DCH HILLE STOCK OPTIONS D410
SKF DUNN'S TRADE SHARE 081K
 SKF DUNN'S MISS DEPARTURE 8F32

LRS LRL SPOTLIGHT E169
TMGC SB Tribute 247J
 TMGC SB MADONNA 238C

REG #:	1617566
BD:	17-Sep-24
BW:	80
WW:	686

CE	BW	WW	YW	MK	CM	MW	ST	DOC	REA	MB	MPI	FPI	TPI	\$G
12	-0.7	79	119	24	6	148.7	17	11	0.91	0.29	105.83	145.69	164.16	-0.04
BREED PERCENTILE RANKING PER EPD														
45	30	20	25	40	50	10	30	70	5	35	50	4	15	90
Breed %		94GV 6AN					OWNER:		Stuecken Brothers					

GELBVIEWH BULLS

PB Gelbvieh Black Homo Polled **405**

TMGC SB Substantial 279M

DCH HILLE STOCK OPTIONS D410
SKF DUNN'S TRADE SHARE 081K
SKF DUNN'S MISS DEPARTURE 8F32

VWF ZEUS Z10
TMGC SB VENUS 264F
TMGC SB Madonna 147B

REG #:	1617586
BD:	22-Sep-24
BW:	82
WW:	747

CE	BW	WW	YW	MK	CM	MW	ST	DOC	REA	MB	MPI	FPI	TPI	\$G
10	1.6	94	135	23	4	172	16	13	0.65	0.43	106.92	155.08	168.22	0
BREED PERCENTILE RANKING PER EPD														
70	85	1	4	50	85	2	45	25	45	15	50	2	10	45
Breed %	88GV 12AR				OWNER:	Stuecken Brothers								



PB Gelbvieh Black Homo Polled **406**

SWW BENSON 1542M42

DCH HILLE Y109
DCH HILLE D453
DCH HILLE B110

DLW TPG FRONTRUNNER 2510F
DLW TPG MS FRONT 1542J ET
EGL D1514

REG #:	1609011
BD:	27-Sep-24
BW:	83
WW:	632

CE	BW	WW	YW	MK	CM	MW	ST	DOC	REA	MB	MPI	FPI	TPI	\$G
17	-2.2	80	117	24	8	129.1	14	12	0.72	0.35	122.94	151.58	191.74	0.00
BREED PERCENTILE RANKING PER EPD														
10	10	20	25	40	15	30	75	50	30	25	10	3	2	45
Breed %	88GV 12AN				OWNER:	Wolf Gelbvieh								

PB Gelbvieh Homo Black Homo Polled **409**

CHMB BCC Mr Hashtag 70M

DCH HILLE D453
GLM HASHTAG# H11
GLM W55

MJBC FRANCHISE F806
CHMB BCC MISS FRANCHISE 3K
JGPG LEE ANN 344Z1 9230G

REG #:	1614765
BD:	09-Oct-24
BW:	68
WW:	533

CE	BW	WW	YW	MK	CM	MW	ST	DOC	REA	MB	MPI	FPI	TPI	\$G
15	0.0	66	105	24	8	116.9	17	15	.97	.26	108.79	135.98	170.93	.03
BREED PERCENTILE RANKING PER EPD														
20	60	80	70	45	25	65	25	5	2	65	40	36	25	45
Breed %	81GV 19AN				OWNER:	Burbank Cattle Company								

PB Gelbvieh Homo Black Homo Polled **407**

TMMW MR STOCK OPTIONS 148M

CCRO CAROLINA LEVERAGE 3214A
DCH HILLE STOCK OPTIONS D410
DCH HILLE B189 ET

PHS PROHART FATAL ATTRACTION 833F
TMMW MISS FATAL ATTRACTION 208J
TMMW MISS MONTANA 286D

REG #:	1618729
BD:	01-Oct-24
BW:	77
WW:	685

CE	BW	WW	YW	MK	CM	MW	ST	DOC	REA	MB	MPI	FPI	TPI	\$G
12	-0.5	79	113	24	8	115.6	17	10	0.87	0.170	119.17	105.16	127.92	0.00
BREED PERCENTILE RANKING PER EPD														
45	35	20	35	40	15	50	30	90	10	65	15	55	55	45
Breed %	100GV				OWNER:	Mulroy Farms, LLC								

PB Gelbvieh Homo Black Homo Polled **410**

HRZN M316

CCRO CAROLINA LEVERAGE 3214A
DCH HILLE STOCK OPTIONS D410
DCHHILLE B189 ET

BWF BRANDYWINE ZACK 201Z
HRZN E103
HRZN C138

REG #:	1616321
BD:	11-Oct-24
BW:	82
WW:	724

CE	BW	WW	YW	MK	CM	MW	ST	DOC	REA	MB	MPI	FPI	TPI	\$G
10	0.8	98	140	26	5	172.9	21	12	0.96	0.24	120.31	142.49	152.02	-0.06
BREED PERCENTILE RANKING PER EPD														
70	70	1	2	20	70	2	2	50	3	45	10	5	25	>95
Breed %	90GV 9AN 1XX				OWNER:	Horizon Farms								

PB Gelbvieh Homo Black Homo Polled **408**

DLFM MAXIMUS 1005M

JKGF CHIEF JUSTICE C205
GMF 115J
GMF MENG 83F

HRZN G213
DRGF MISS FORTUNE 221K
DRGF 808F

REG #:	1618162
BD:	05-Oct-24
BW:	60
WW:	545

CE	BW	WW	YW	MK	CM	MW	ST	DOC	REA	MB	MPI	FPI	TPI	\$G
15	-1.80	66	98	26	10	98.3	18	14	.71	.220	120.39	111.85	155.47	.02
BREED PERCENTILE RANKING PER EPD														
20	15	75	75	20	2	80	20	10	30	50	10	40	20	20
Breed %	83GV 17AN				OWNER:	Darnell Farms								

PB Gelbvieh Homo Black Homo Polled **411**

TMGC SB Barcelona 293M

CCRO CAROLINA LEVERAGE 3214A
TMGC SB Formula 12E
TMGC SB Danielle 07C

AJM MARKES 252D
HUTR JUSTAMERE SANDI
HURT JUSTAMERE SANDI

REG #:	1617600
BD:	11-Oct-24
BW:	66
WW:	581

CE	BW	WW	YW	MK	CM	MW	ST	DOC	REA	MB	MPI	FPI	TPI	\$G
16	-2.3	70	104	26	9	101.3	15	11	0.68	0.4	122.17	127.78	175.27	0
BREED PERCENTILE RANKING PER EPD														
15	10	60	60	20	5	75	60	70	35	15	10	20	10	45
Breed %	89GV 11AN				OWNER:	Stuecken Brothers								

GELBVIEH BULLS

PB Gelbvieh Homo Black Homo Polled
HRZN M365

412

VRT LAZY TV SAM U451
SKF DUNN'S ESCANDER 023E
SKF DUNN'S MS CATHERINE 5C45

REG #:	1616309
BD:	23-Oct-24
BW:	87
WW:	624

GMF FORTUNE 616D
HRZN G321
HRZN D381

CE	BW	WW	YW	MK	CM	MW	ST	DOC	REA	MB	MPI	FPI	TPI	\$G
13	0.2	70	109	24	8	113.7	18	12	0.72	0.48	113.09	154.24	202.36	0.04
BREED PERCENTILE RANKING PER EPD														
35	55	60	45	40	15	55	20	50	30	10	25	2	1	10
Breed %		88GV 12AN			OWNER:		Horizon Farms							

PB Gelbvieh Homo Black Homo Polled
WAAL 810M

415

HKEK BLACK IMPACT 3960N
JKGF TOP STOCK J137
JKGF REAL CANDY F137

REG #:	1612798
BD:	01-Nov-24
BW:	76
WW:	506

TAU MR KRUGERRAND 70M 130P
JENJ MISS JENJ 810F
GBNR BAR NONE MS MAVERICK ET

CE	BW	WW	YW	MK	CM	MW	ST	DOC	REA	MB	MPI	FPI	TPI	\$G
8	2.2	79	122	22	5	141.1	17	12	0.6	0.02	97.01	87.91	85.77	.05
BREED PERCENTILE RANKING PER EPD														
90	95	20	20	60	70	15	30	50	55	95	80	85	95	3
Breed %		88GV 12AN			OWNER:		L & L Gelbvieh							

PB Gelbvieh Homo Black Homo Polled
HRZN M367

413

CCRO CAROLINA LEVERAGE 3214A
DCH HILLE STOCK OPTIONS D410
DCH HILLE B189 ET

REG #:	1616304
BD:	23-Oct-24
BW:	87
WW:	627

SKF DUNN'S ESCANDER 023E
HRZN H364
HRZN D383

CE	BW	WW	YW	MK	CM	MW	ST	DOC	REA	MB	MPI	FPI	TPI	\$G
15	0.2	76	114	21	8	111.9	21	16	0.52	0.54	128.48	131.05	184.76	0.03
BREED PERCENTILE RANKING PER EPD														
20	55	30	35	70	15	55	2	70	3	2	15	4	10	
Breed %		93GV 6AN 1XX			OWNER:		Horizon Farms							

PB Gelbvieh Homo Black Homo Polled
DRGF 471M

416

DDGR RESILIENT 275D
GMF 034H
GMF MENG 57C

REG #:	1630423
BD:	05-Nov-24
BW:	70
WW:	627

HRZN H182
DRGF 252K
DRGF 30H

CE	BW	WW	YW	MK	CM	MW	ST	DOC	REA	MB	MPI	FPI	TPI	\$G
10	0	76	119	25	6	130.5	20	14	0.69	0.31	107.8	85.9	105.16	-0.01
BREED PERCENTILE RANKING PER EPD														
70	50	30	25	30	50	30	5	15	35	30	45	85	80	60
Breed %		90GV 10AN			OWNER:		Duck River Gelbvieh							

PB Gelbvieh Homo Black Homo Polled
DLFM JAC 1030M

414

JKGF CHIEF JUSTICE C205
GMF 115J
GMF MENG 83F

REG #:	1618163
BD:	30-Oct-24
BW:	60
WW:	579

HRZN G213
DRGF MISS FORTUNE 223K
DRGF 901G

CE	BW	WW	YW	MK	CM	MW	ST	DOC	REA	MB	MPI	FPI	TPI	\$G
16	-2.7	67	101	26	9	92.2	18	14	.78	.39	126.54	150.58	208.97	.04
BREED PERCENTILE RANKING PER EPD														
15	5	70	65	20	5	85	20	10	20	15	3	3	1	10
Breed %		82GV 18AN			OWNER:		Darnell Farms							

PB Gelbvieh Homo Black Homo Polled
WAAL 259M

417

DCH HILLE Y109
DCH BIG ANDY D672
DCH HILLE 4266

REG #:	1612581
BD:	05-Nov-24
BW:	77
WW:	567

EGL LIFELINE B101
ADS MS S & S LIFELINE 259K
ADS MS S & S GODFATHER 057H

CE	BW	WW	YW	MK	CM	MW	ST	DOC	REA	MB	MPI	FPI	TPI	\$G
17	-2.9	65	80	25	8	83.3	15	11	0.14	0.24	125.78	99.69	147.08	-0.07
BREED PERCENTILE RANKING PER EPD														
10	4	80	95	30	15	95	60	70	>95	45	3	65	30	>95
Breed %		84GV 16AN			OWNER:		L & L Gelbvieh							



PB Gelbvieh Homo Black Polled
GATS Gatson Sam Mathias 472M

418

TMMW HOLE IN ONE 93D
SKF DUNN'S HOLE IN ONE SAM 026G
SKF DUNN'S MISS SAM 719E

REG #:	1612765
BD:	07-Nov-24
BW:	87
WW:	641

TOP LANMARK BL P465 S409
TMGC SB SPLENDOR 46B
TMGC STUBRO VANITYS 57T

CE	BW	WW	YW	MK	CM	MW	ST	DOC	REA	MB	MPI	FPI	TPI	\$G
15	0.2	72	103	24	8	116.6	20	12	0.34	0.29	122.31	86.9	125.22	0
BREED PERCENTILE RANKING PER EPD														
20	55	50	60	40	15	50	5	50	95	35	10	85	55	45
Breed %		94GV 6AN			OWNER:		Gatson-Workman Gelbvieh							

GELBVIEW BULLS

PB Gelbvieh Homo Black Homo Polled
MTB BCC Maverick 99M

419

DCH HILLE 3453
GLM HASHTAG# H11
GLM W55

REG #:	1614791
BD:	12-Nov-24
BW:	70
WW:	524

TMMW DESTINATION 82Y
MTB BCC MISS DESTINATION 64A
LCBK BCC JADES FORTUNE 11U

CE	BW	WW	YW	MK	CM	MW	ST	DOC	REA	MB	MPI	FPI	TPI	\$G
14	1.2	76	116	26	7	133.8	21	16	0.93	0.11	121.35	110.58	131.82	0.01
BREED PERCENTILE RANKING PER EPD														
25	80	30	30	20	30	25	2	2	4	80	10	45	45	30
Breed %	100GV				OWNER:	Burbank Cattle Company								



PB Gelbvieh Homo Black Homo Polled
TMMW MR STOCK OPTIONS 213M

420

CCRO CAROLINA LEVERAGE 3214A
DCH HILLE STOCK OPTIONS D410
DCH HILLE B189 ET

REG #:	1618943
BD:	10-Dec-24
BW:	72
WW:	775

TMMW BLACK GRANITE 88Z
TMMW MISS GRANITE 175C
TMMW MISS GOVENOR 129Z

CE	BW	WW	YW	MK	CM	MW	ST	DOC	REA	MB	MPI	FPI	TPI	\$G
14	-1.4	76	112	25	7	122.4	20	13	1.01	0.110	122.61	112.09	136.72	-0.02
BREED PERCENTILE RANKING PER EPD														
25	20	30	40	30	40	5	25	2	80	10	40	40	40	70
Breed %	94GV 6AN				OWNER:	Mulroy Farms, LLC								

PB Gelbvieh Black
GMF GMF 52N

Homo Polled

423

DLW NEW FRONTIER 33A ET
DLGO AMERICAN OUTLAW
JKGF MISS FORTUNE C015 ET

REG #:	1641201
BD:	16-Jan-25
BW:	72
WW:	510

PHG EMINENCE E02
BNC MISS HOJER K240
BEA BEA 2072Z

CE	BW	WW	YW	MK	CM	MW	ST	DOC	REA	MB	MPI	FPI	TPI	\$G
10	1.5	85	127	13	7	153.1	14	15	0.95	0.5	99.47	173.01	195.44	0
BREED PERCENTILE RANKING PER EPD														
70	85	10	10	>95	30	10	75	4	3	5	75	1	2	45
Breed %	100GV				OWNER:	Meng Farms Cattle Company								

PB Gelbvieh Homo Black Homo Polled
SKF DUNN'S NEW ADVANCEMENT 001N

421

KCF BENNETT E158
TMGC SB New Logic 147H
TMGC SB PEARL 321Z

REG #:	1636676
BD:	05-Jan-25
BW:	56
WW:	629

WAHL 4H ET
SKF DUNN'S MISS LORRAINE 3L37
SKF DUNN'S MS CATHERINE 5C45

CE	BW	WW	YW	MK	CM	MW	ST	DOC	REA	MB	MPI	FPI	TPI	\$G
22	-4.8	64	100	23	9	98.4	19	15	0.6	0.48	134.21	122.17	187.96	0.03
BREED PERCENTILE RANKING PER EPD														
1	1	85	70	50	5	80	10	4	55	10	1	25	3	10
Breed %	88GV 12AN				OWNER:	Sandy Knoll Farms								

PB Gelbvieh Homo Black Polled
SKF DUNN'S POWER UP 039N

424

PHG EMINENCE E02
BNC ASCENDANCE K318
BNC MISS HOJER H103

REG #:	1636721
BD:	03-Feb-25
BW:	88
WW:	633

TMMW 200P2 MR FORTUNE 219X
SKF DUNN'S MISS ETHEL 7E26
SKF DUNN'S MISS TANA 719T

CE	BW	WW	YW	MK	CM	MW	ST	DOC	REA	MB	MPI	FPI	TPI	\$G
16	-2.4	60	90	24	5	94.2	20	12	0.41	0.33	115.91	104.13	152.51	0.01
BREED PERCENTILE RANKING PER EPD														
15	10	95	90	40	70	85	5	50	90	25	20	55	20	30
Breed %	100GV				OWNER:	Sandy Knoll Farms								

PB Gelbvieh Black Homo Polled
SKF DUNN'S PATHFINDER 012N

422

TMMW DESTINATION 82Y
SKF DUNN'S DEPARTURE 052D
SKF DUNN'S MISS WARNA 962W

REG #:	1636687
BD:	13-Jan-25
BW:	80
WW:	603

WAHL 4H ET
SKF DUNN'S MISS LAKIN 3L63
SKF DUNN'S MISS JACKPOT 473B

CE	BW	WW	YW	MK	CM	MW	ST	DOC	REA	MB	MPI	FPI	TPI	\$G
15	-2.7	67	109	20	7	99.5	23	12	0.19	0.6	124.52	127.24	191.72	0.07
BREED PERCENTILE RANKING PER EPD														
20	5	70	45	75	30	75	1	50	>95	2	4	20	2	1
Breed %	100GV				OWNER:	Sandy Knoll Farms								

PB Gelbvieh Black Homo Polled
SKF DUNN'S INFERNO 055N ET

425

BNC AT EASE A357
BNW PLAINSMAN JUBAL 1104J
BNW DESERT ROSE 9001G

REG #:	1636733
BD:	03-Feb-25
BW:	ET
WW:	ET

ISDR GOBLIN ADVANTAGE
SKF DUNN'S MISS WARNA 962W
SKF MISS EXCLUSIVE 02L

CE	BW	WW	YW	MK	CM	MW	ST	DOC	REA	MB	MPI	FPI	TPI	\$G
16	-2.3	59	87	26	6	115.5	21	13	0.49	0.52	110.53	117.8	167.16	0.01
BREED PERCENTILE RANKING PER EPD														
15	10	95	95	20	50	50	2	25	80	4	35	30	10	30
Breed %	100GV				OWNER:	Sandy Knoll Farms								

GELBVIEW BULLS

PB Gelbvieh Homo Black Homo Polled
SKF **Dunn's Everest 065N**

426

PHG EMINENCE E02
 BNC ASCENDANCE K318
 BNC MISS HOJER H103

REG #:	1636748
BD:	08-Feb-25
BW:	82
WW:	644

MJBC FRANCHISE F806
SKF DUNN'S MISS FRANCHISE K233 ET
 SKF DUNN'S MISS EXCLUSIVE 756E ET

CE	BW	WW	YW	MK	CM	MW	ST	DOC	REA	MB	MPI	FPI	TPI	\$G
10	1.8	84	132	19	6	153.1	19	13	0.72	0.51	106.7	165.06	196.77	0.04
BREED PERCENTILE RANKING PER EPD														
70	90	10	5	85	50	10	10	25	30	5	50	1	2	10
Breed %		100GV			OWNER:		Sandy Knoll Farms							

PB Gelbvieh Homo Black Homo Polled
SKF **DUNN'S RENEGADE 085N**

430

TMGC SB Formula 12E
 TMGC SB DCN Revolution 287G
 TMGC 213X

REG #:	1636766
BD:	17-Feb-25
BW:	80
WW:	598

SKF DUNN'S DEPARTURE 052D
SKF DUNN'S MISS DEPARTURE 9G16
 SKF DUNN'S MISS CHLOE 5C13

CE	BW	WW	YW	MK	CM	MW	ST	DOC	REA	MB	MPI	FPI	TPI	\$G
14	-0.7	60	87	20	9	103.3	20	14	0.68	0.53	107.82	141.73	196.58	0.02
BREED PERCENTILE RANKING PER EPD														
25	30	95	95	75	5	70	5	10	35	4	45	5	2	20
Breed %		95GV 5 AN			OWNER:		Sandy Knoll Farms							

PB Gelbvieh Homo Black Homo Polled
SKF **Dunn's Blueprint 061N**

427

KCF BENNETT E158
 TMGC SB New Logic 147H
 TMGC SB PEARL 321Z

REG #:	1636743
BD:	09-Feb-25
BW:	71
WW:	615

SKF DUNN'S DESTINY 056F
SKF DUNN'S MS DESTINATION UNKNOWN K232 ET
 SKF DUNN'S MISS EXCLUSIVE 756E ET

CE	BW	WW	YW	MK	CM	MW	ST	DOC	REA	MB	MPI	FPI	TPI	\$G
13	-1.2	71	109	22	9	121.4	17	15	0.47	0.56	111.26	116.46	160.82	0.05
BREED PERCENTILE RANKING PER EPD														
35	25	55	45	60	5	40	30	4	80	3	35	35	15	3
Breed %		94GV 6AN			OWNER:		Sandy Knoll Farms							

PB Gelbvieh Homo Black Homo Polled
SKF **Dunn's UNCLE SAM 095N**

431

KCF BENNETT E158
 TMGC SB New Logic 147H
 TMGC SB PEARL 321Z

REG #:	1636774
BD:	22-Feb-25
BW:	85
WW:	695

VRT LAZY TV SAM U451
SKF DUNN'S MISS SAM 519C
 SKF DUNN'S MISS WHARTON 373A

CE	BW	WW	YW	MK	CM	MW	ST	DOC	REA	MB	MPI	FPI	TPI	\$G
12	-1.7	69	102	23	6	103.9	19	15	0.74	0.49	113.5	122.47	164.54	0.02
BREED PERCENTILE RANKING PER EPD														
45	15	65	65	50	50	70	10	4	25	10	25	25	15	20
Breed %		88GV 12AN			OWNER:		Sandy Knoll Farms							

PB Gelbvieh Homo Black Homo Polled
SKF **DUNN'S APEX 059N**

428

PHG EMINENCE E02
 BNC ASCENDANCE K318
 BNC MISS HOJER H103

REG #:	1636741
BD:	12-Feb-25
BW:	77
WW:	614

SKF DUNN'S DEPARTURE 052D
SKF DUNN'S MS DEPARTURE F817
 SKF DUNN'S MISS CHLOE 5C13

CE	BW	WW	YW	MK	CM	MW	ST	DOC	REA	MB	MPI	FPI	TPI	\$G
12	-1.6	79	124	20	7	145	18	13	0.49	0.28	109.51	126.13	150.24	0.05
BREED PERCENTILE RANKING PER EPD														
45	15	20	15	75	30	15	20	25	80	35	40	20	25	3
Breed %		100GV			OWNER:		Sandy Knoll Farms							

PB Gelbvieh Homo Black Homo Polled
SKF **DUNN'S PROTOCOL 228N**

429

KCF BENNETT E158
 TMGC SB New Logic 147H
 TMGC SB PEARL 321Z

REG #:	1637004
BD:	13-Feb-25
BW:	92
WW:	622

TMMW DESTINATION 82Y
SKF DUNN'S MISS DESTINATION 831F
 SKF DUNN'S MISS BLACK SANDY 448B

CE	BW	WW	YW	MK	CM	MW	ST	DOC	REA	MB	MPI	FPI	TPI	\$G
13	-1.2	75	122	20	7	141.8	19	14	0.36	0.47	109.78	72.14	100.43	0.07
BREED PERCENTILE RANKING PER EPD														
35	25	35	15	75	30	15	10	10	95	10	40	95	85	1
Breed %		88GV 12AN			OWNER:		Sandy Knoll Farms							



GELBIEH BULLS

PB Gelbvieh Homo Black Homo Polled
SKF **Dunn's GETTYSBURG 099N**

432

DLGO AMERICAN OUTLAW
KCF BENNETT L126
 KCF MISS 13Z D91

REG #:	1636779
BD:	25-Feb-25
BW:	87
WW:	637

TMGC SB DCN Revolution 287G
SKF DUNN'S MISS KIMBERLY 2K20
 SKF DUNN'S MISS SAM 815F

CE	BW	WW	YW	MK	CM	MW	ST	DOC	REA	MB	MPI	FPI	TPI	\$G
10	-0.7	53	83	20	7	72.2	21	15	0.72	0.55	102.78	142.36	201.45	0.04
BREED PERCENTILE RANKING PER EPD														
70	30	95	75	30	2	4	30	3	65	5	1	10		
Breed %		100GV	OWNER:		Sandy Knoll Farms									

PB Gelbvieh Black Homo Polled
SKF **Dunn's NUANCE 128N**

436

CCRC FRONTIER BLUE'S 008H
RNBG 503L
 RNBG 503G

REG #:	1636832
BD:	08-Mar-25
BW:	87
WW:	697

SKF DUNN'S EFFERVESCENT 042E
SKF DUNN'S MISS EFFERVESCENT 154J ET
 SKF DUNN'S MISS ELIZA JANE 7E30

CE	BW	WW	YW	MK	CM	MW	ST	DOC	REA	MB	MPI	FPI	TPI	\$G
13	-1.4	58	88	28	8	59	22	10	0.33	0.4	124.69	77.55	136.91	-0.04
BREED PERCENTILE RANKING PER EPD														
35	20	95	90	10	15	>95	1	90	95	15	4	95	40	90
Breed %		100GV	OWNER:		Sandy Knoll Farms									

PB Gelbvieh Homo Black Homo Polled
SKF **Dunn's NAVIGATOR 108N**

433

DLGO AMERICAN OUTLAW
KCF BENNETT L126
 KCF MISS 13Z D91

REG #:	1636811
BD:	28-Feb-25
BW:	89
WW:	659

SKF DUNN'S DESTINY 056F
IAND DUNN'S MISS DESTINY 153J
 IAND DUNN'S MISS EXCEL 721E

CE	BW	WW	YW	MK	CM	MW	ST	DOC	REA	MB	MPI	FPI	TPI	\$G
13	-1.6	60	91	23	8	82	20	12	0.35	0.76	115.37	137.51	209.22	0.02
BREED PERCENTILE RANKING PER EPD														
35	15	95	85	50	15	95	5	50	95	1	20	10	1	20
Breed %		88GV 12AN	OWNER:		Sandy Knoll Farms									

PB Gelbvieh Homo Black Polled
BVC **MR 422N**

437

TMGC SB Formula 12E
TMGC SB Barcelona 215K
 TMGC SB OPAL 163F

REG #:	1636615
BD:	31-Mar-25
BW:	87
WW:	758

SKF DUNN'S EFFERVESCENT 042E
BVC MS EFFERVESCENT 519G
 BVC MISS 53C

CE	BW	WW	YW	MK	CM	MW	ST	DOC	REA	MB	MPI	FPI	TPI	\$G
13	-0.4	72	109	26	7	123.7	17	12	0.77	0.49	110.7	179.36	224.81	0.06
BREED PERCENTILE RANKING PER EPD														
35	40	50	45	20	30	40	30	50	20	10	35	1	1	2
Breed %		88GV 12AN	OWNER:		Bryce Family Farm									

PB Gelbvieh Homo Black Homo Polled
SKF **DUNN'S ALPHA FUND 176N**

434

DLGO AMERICAN OUTLAW
KCF BENNETT L126
 KCF MISS 13Z D91

REG #:	1636875
BD:	01-Mar-25
BW:	75
WW:	630

DCH HILLE STOCK OPTIONS D410
SKF DUNN'S MISS STOCK OPTIONS 189J
 SKF DUNN'S MISS SAM 514C

CE	BW	WW	YW	MK	CM	MW	ST	DOC	REA	MB	MPI	FPI	TPI	\$G
15	-0.1	79	118	22	10	115	24	15	0.79	0.45	137.12	122.78	175.53	-0.03
BREED PERCENTILE RANKING PER EPD														
20	45	20	25	60	2	50	1	4	15	10	1	25	10	85
Breed %		100GV	OWNER:		Sandy Knoll Farms									

PB Gelbvieh Black Homo Polled
SKF **DUNN'S BAMBINO 202N**

438

DDGR SLUGGER 42G
GLM LOADED BASES J2123
 GLM 609

REG #:	1636889
BD:	31-Mar-25
BW:	86
WW:	739

TMGC SB Good Business 143B
SKF DUNN'S MS BUSINESS SCHOOL 8F75
 SKF DUNN'S MISS WHARTON 217Z

CE	BW	WW	YW	MK	CM	MW	ST	DOC	REA	MB	MPI	FPI	TPI	\$G
4	2.3	85	130	26	3	171.2	13	10	0.7	0.2	79.81	92.5	72.59	-0.05
BREED PERCENTILE RANKING PER EPD														
-0.05	95	10	10	20	95	2	85	90	30	55	55	75	75	95
Breed %		94GV 6AN	OWNER:		Sandy Knoll Farms									

PB Gelbvieh Homo Black Homo Polled
SKF **Dunn's NICKELBACK 116N**

435

DLGOAMERICAN OUTLAW
KCF BENNETT L126
 KCF MISS 13Z D91

REG #:	1636820
BD:	05-Mar-25
BW:	84
WW:	689

TMGC DESTINATION 82Y
SKF 271K
 SKF DUNN'S MISS BLACK SANDY 768E

CE	BW	WW	YW	MK	CM	MW	ST	DOC	REA	MB	MPI	FPI	TPI	\$G
10	0.4	70	105	24	7	112.6	21	14	0.58	0.51	109.14	140.55	185.17	0.03
BREED PERCENTILE RANKING PER EPD														
70	60	60	55	40	30	55	2	10	60	5	40	10	4	10
Breed %		94GV 6AN	OWNER:		Sandy Knoll Farms									

COMMERCIAL FEMALES

Sandy Knoll Farms, Brian Dunn
St. John, KS * 620-786-4039
40 Balancer & Gelbvieh type open heifers

KZ Cattle Co Kerry Zillinger
Phillipsburg, KS * 785-543-3015
15 Balancer & Gelbvieh type open heifers

Chapuis Cattle Co. Charlie Chapuis
Louisiana, MO. 573-754-0079
5, 2 year old Commercial Balancer Bred Heifers
AI bred Calve June 1st.

OPEN FEMALES



Seedstock Plus Genetics has exciting new options for your AI needs!

'Celtic Fox'

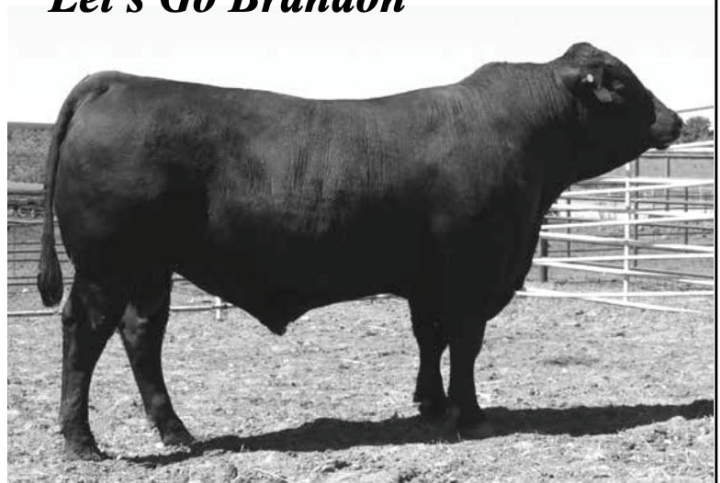


AMGV: 1572714 Homo Black / Homo Polled 50GV 50AN

CE	BW	WW	YW	MK	TM	CEM	ST	DOC	CW	REA	MB	\$C	FPI	EPI
16	-1.8	76	127	29	67	9	16	14	32	.68	.83	116	100	225
BREED PERCENTILE RANKING PER EPD														
15	25	35	25	10	15	15	30	15	65	20	1	35	3	1

This promising young sire has so much going for him! Top 15% calving ease with a top 25% YW performance! Top 1% Marbling & EPI! He posted a 4.88 IMF with a 117 ratio while gaining 4.29# / day! His RFI score during that time is a -1.85 / ranking him 12th in a group of 63 bulls. His exceptional temperament, structure and actual data make him a 'must sample' herd sire! Already being used in commercial heifer programs as well as registered herds!

'Let's Go Brandon'



AMGV: 1580278 Homo Black / Homo Polled 50GV 50AN

CE	BW	WW	YW	MK	TM	CEM	ST	DOC	CW	REA	MB	\$C	FPI	EPI
12	0.7	91	154	27	73	6	14	14	69	.87	.32			92
BREED PERCENTILE RANKING PER EPD														
65	75	3	2	20	3	65	55	15	1	4	65			15

Check out the numbers on this fellow! Exceptional WW & YW EPDs! He has plenty of body and substance to add those pounds for extra weaning weight and dollars at sale time! Sired by Schiefelbein Showman, the record setting, \$125,000 bull from the 2019 Scheifelbein Farms sale that sold to Canada. (he is deceased with limited semen) His dam is a young Purebred female that is outcross to most of the popular pedigrees!

'Dollar Sign' (photo coming!)

AMGV: 1573586 Homo Black / Homo Polled 63GV 37AN

CE	BW	WW	YW	MK	TM	CEM	ST	DOC	CW	REA	MB	\$C	FPI	EPI
13	-0.7	84	135	25	69	9	14	14	48	.79	.58	107	96	120
BREED PERCENTILE RANKING PER EPD														
50	45	15	15	35	10	15	55	15	20	10	15	55	10	50

Out of a Dam of Merit daughter of the popular Stock Options bull, Dollar Sign balances the growth, maternal and carcass numbers very well! His length of body and overall structure will make him a sire to save daughters out of!

'Mr Exponential' (photo coming!)

AMGV: 1576740 Homo Black / Homo Polled 52GV 48AN

CE	BW	WW	YW	MK	TM	CEM	ST	DOC	CW	REA	MB	\$C	FPI	EPI
19	-1.4	77	129	22	61	11	15	16	46	.70	.71	111	97	147
BREED PERCENTILE RANKING PER EPD														
2	30	35	20	65	45	3	40	2	25	20	4	45	5	20

An excellent prospect for heifers! His sire has been used successfully for multiple seasons at Mulroy Farms. His dam is a solid, functional female with the reliable pedigree lines of Granite, Govenor, Mytty In Focus & Bismarck.

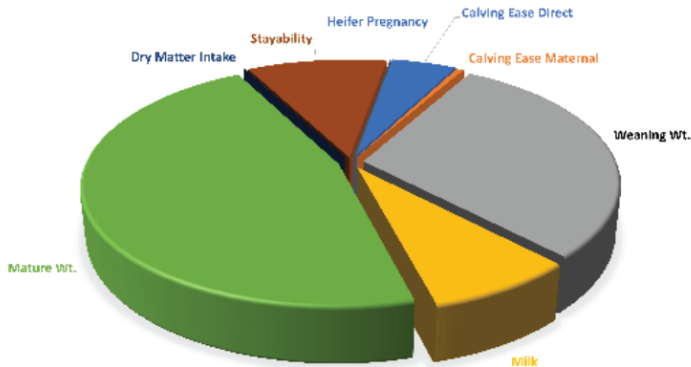


www.seedstockplusgenetics.com

Contact: Seedstock Plus: 877-486-1160
or email: john@seedstockplus.com

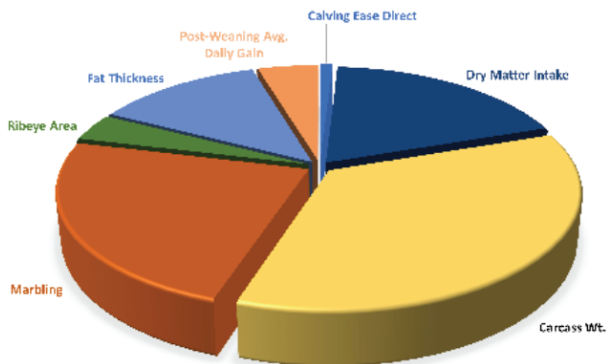
NEW EPD INDEXES!

FIGURE 1. AGA MATERNAL PROFIT INDEX SELECTION CRITERIA RELATIVE EMPHASIS



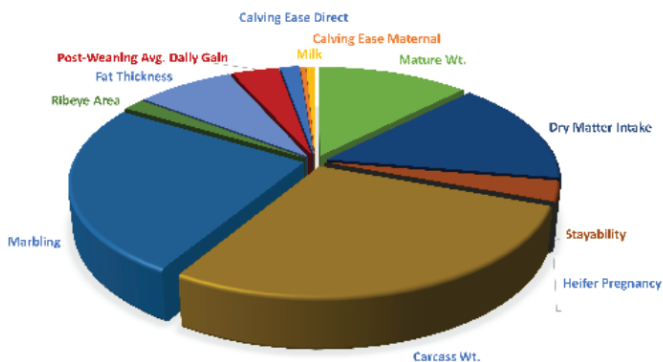
Maternal Profit Index (MPI): In this production scenario, Gelbvieh bulls are mated to Angus-based cows with surplus calves marketed at weaning, with replacement heifers retained from the calf crop. EPDs weighted in this index are Calving Ease Direct and Maternal, Weaning Weight, Milk, Mature Weight, Dry Matter Intake, Stayability, and Heifer Pregnancy. Mature weight is the primary driver and represents the significant cost of maintenance energy requirement in the cow-calf sector. Weaning Weight and Milk (expressed in pounds of calf weaning weight) represent the principal revenue stream. Stayability helps account for differences in replacement costs in the system and the effect of heifer retention on revenue streams. This index should be used by commercial cattlemen whose production scenario includes the traditional marketing of calves at weaning and replacement retention from the herd.

FIGURE 2. AGA FEEDER PROFIT INDEX SELECTION CRITERIA RELATIVE EMPHASIS



Feeder Profit Index (FPI): Envisioned as a completely terminal index, FPI assumes all calves are marketed as finished beef carcasses priced on a value-based grid. Thus, it shouldn't be used in production scenarios where replacements are kept from these matings. The new FPI formulation more precisely weights economically relevant traits (ERTs) available for selection, including the key carcass traits of Carcass Weight, Ribeye Area, and Dry Matter Intake that were not included in the original formulation. The new FPI also weights Fat Thickness, post-weaning Average Daily Gain, and Calving Ease Direct. Carcass value determined by carcass weight, quality, and yield grade influencing traits accounts for approximately 75% of the index as principal revenue drivers. Dry Matter Intake captures differences in expected costs to the terminal carcass endpoint.

FIGURE 3. AGA TOTAL PROFIT INDEX SELECTION CRITERIA RELATIVE EMPHASIS



Total Profit Index (TPI): Combining replacement female retention from the herd with carcass endpoint for marketed surplus heifers and all steers, TPI balances both maternal and terminal selection criteria. Because of the challenges faced by commercial cattlemen by the antagonisms in selection for this production scenario, TPI includes the largest and most diverse set of EPDs in the model, including carcass traits as the primary revenue drivers with cow Mature Weight, Stayability and Dry Matter Intake as cost drivers.

AMERICAN GELBIEH ASSOCIATION ECONOMIC INDEXES

Feeder Profit Index™ (FPI™):

Envisioned as a completely terminal index, FPI assumes all calves are marketed as finished beef carcasses priced on a value-based grid. Thus, it shouldn't be used in production scenarios where replacements are kept from these matings. The new FPI formulation more precisely weights economically-relevant traits available for selection, including the key carcass traits of Carcass Weight (CW), Ribeye Area (REA), and Dry Matter Intake (DMI) that were not included in the original formulation. The new FPI also weights Fat Thickness (FAT), post-weaning Average Daily Gain (ADG), and Calving Ease Direct (CED). Carcass value determined by carcass weight, quality and yield grade influencing traits accounts for approximately 75% of the index as principal revenue drivers. Dry Matter Intake captures differences in expected costs to the terminal carcass endpoint.

Maternal Profit Index (MPI): In this production scenario, Gelbvieh bulls are mated to Angus-based cows with surplus calves marketed at weaning, with replacement heifers retained from the calf crop. EPDs weighted in this index are Calving Ease Direct (CED) and Maternal (CEM), Weaning Weight (WW), Milk (MM), Mature Weight (MW), Dry Matter Intake (DMI), Stayability (STAY), and Heifer Pregnancy (HP). Mature weight is the primary driver and represents the significant cost of maintenance energy requirement in the cow-calf sector. Weaning Weight and Milk (expressed in pounds of calf weaning weight) represent the principal revenue stream. Stayability helps account for differences in replacement costs in the system and the effect of heifer retention on revenue streams. This index should be used by commercial cattlemen whose production scenario includes the traditional marketing calves at weaning and replacement retention from the herd.

Total Profit Index (TPI): Combining replacement female retention from the herd with carcass endpoint for marketed surplus heifers and all steers, TPI balances both maternal and terminal selection criteria. Because of the challenges faced by commercial cattlemen by the antagonisms in selection for this production scenario, TPI includes the largest and most diverse set of EPDs in the model, including carcass traits as the primary revenue drivers with cow Mature Weight (MW), Stayability (STAY), and Dry Matter Intake (DMI) as cost drivers.



701x[®] AUTONOMOUS RANCHER[®]

Working Together for Industry Excellence



Seedstock Plus

KTPRO TAG FOR BULLS



- 5-MINUTE GPS TRACKING
- OUT-OF-FENCE ALERTS
- HEALTH ALERTS
- BULL MOUNTING DETECTION
- LOW/NO MOUNT ALERT

KTPRO TAG FOR COWS



- ESTRUS DETECTION
- CALVING DETECTION
- HEALTH ALERTS
- 5-MINUTE GPS TRACKING
- OUT-OF-FENCE ALERTS

KTLITE TAG FOR CALVES



- RELATIVE GPS
- HEALTH ALERTS
- MISSING CALF ALERTS
- ROLL CALL
- BIRTHDATE VERIFICATION

SOLAR POWERED

SATELLITE CONNECTED



TWO-PIN DESIGN

BLUETOOTH

BLUETOOTH CONNECTED



RFID ENABLED



XWATSEN REMOTE WATER SENSOR



701X[®] VID TAG 25 PACK
CUSTOM LASERING AVAILABLE



701X[®] EID WAND



DIRECT INTEGRATION
BETWEEN HERD MGMT APP
AND DIGITALBEEF REGISTRY



INFO@701X.COM



1.844.444.7019



701X.COM



FARGO, ND



Terms & Conditions

Terms: Terms of the sale are cash or personal check unless satisfactory credit arrangements have been made with the seller previous to the sale.

Bidding: All animals sell to the highest bidder. Any disputes or challenges regarding bids shall be settled by the auctioneer and his decision shall be final. Mailed or telephoned bids will be handled with the strictest confidence.

Registrations & Transfers: Each animal which is offered and sold has a certificate of registry available at the time of sale. The seller is responsible for the proper transfer of the certificate to the purchaser including full payment of transfer fees.

Purchaser's Risk: Each animal becomes the property of and therefore is also the risk of the purchaser as soon as it is sold.

Announcements: Any errors or changes in information contained in the catalog will be announced from the auction block. Such announcements shall take precedence over information contained herein.

Rights and Obligations: The above terms and conditions of sale constitute a contract between the buyer and seller of each animal and shall be equally binding to both. Animals resold following purchase in this sale shall constitute a separate transaction and the rights and obligations of the parties connected thereto are not covered by the above terms and conditions of this sale. Neither the host farm, auctioneers, nor any other person connected with the management or conduct of this sale assumes any liability, legal or otherwise, except as set forth above.

DEFINITIONS AND GUARANTEES

HORNED: An animal with a horn growth affixed to the skull that has or has not been removed.

POLLED/SCURRED: An animal with rudimentary horn growth that will not develop into a horn. The rudimentary horn growth may or may not become affixed to the skull at an older age.

POLLED: An animal with absence of horn growth (An animal can have scurs and still be genetically polled)

DOUBLE POLLED: An animal whose sire and dam are both polled or scurred, this gives this animal the possibility of being homozygous polled for the polled trait but it is not yet proven so.

HOMOZYGOUS POLLED: An animal who carries two polled genes, and will produce polled or polled/scurred offspring with every mating.

DILUTER GENE: A gene carried by some Gelbvieh cattle that affects the degree of red color in the hair coat. Bulls carrying this gene can produce gray calves when mated to black cows or cream colored calves when mated to each other.

DILUTER FREE: All Red Angus are free of the diluter gene as are all red Gelbvieh cattle resulting from a double black mating. Red Gelbviehs can also be proven diluter-free by mating to black cows and producing all red or black offspring

DOUBLE BLACK: An animal whose sire and dam are both black, which give the animal the possibility of being homozygous for the black trait but its not yet proven so.

HOMOZYGOUS BLACK: An animal who carries two black genes and has been proven by mating or genetically tested to produce black or black factor (gray when mated with diluter-based genetics) calves with every mating.

For more information contact: Seedstock Plus Toll Free at: 877-486-1160 or John on his cell: 660-734-1165 or visit the website: www.seedstockplus.com

Seedstock Plus Sale Calendar

North Missouri Bull Sale

February 28, 2026

125 Balancer & Gelbvieh Bulls - all Black!
Kingsville Livestock, Kingsville, MO

Arkansas Bull Sale

March 7, 2026

75 Angus, Brangus, Gelbvieh
& Balancer Bulls - Red & Black!
Hope Livestock Auction, Hope, AR

Red Reward Bull & Heifer Sale

March 14, 2026

70 Red Gelbvieh & Balancer Bulls
Plus! Red Comm & Registered Females
Wheeler Livestock, Osceola, MO

South Missouri Bull & Female Sale

March 28, 2026

125 Balancer & Gelbvieh Bulls - all Black!
Plus! Black Comm & Registered Open Heifers
Joplin Regional Stockyards, Carthage, MO

Keep Your Mind in the Market

Volatile commodity markets and the speed at which narrow windows of opportunity to manage risk open and close underscore the value of keeping your mind engaged in the market, no matter how frequently you trade cattle.

That's why Seedstock Plus continues to offer as a free service to its customers and members a complimentary subscription to the daily Cattle Current electronic newsletter. It offers a convenient snapshot of the previous day's cash and futures markets for calves, feeders, fed cattle and related commodities. You'll also find pertinent market-related news.

If you're not receiving Cattle Current, or if you'd like to receive it at more than one e-mail address, please let us know and we'll add you to the list. You can send your request to wes@cattlecurrent.com.

Working Together for Industry Excellence



Seedstock Plus

18864 Kepler Dr.
St. Catharine, MO 64628
RETURN SERVICE REQUESTED

FIRST CLASS MAIL

